

Loonan Stock Farm

A herd of brown cows is grazing in a field of tall, dry grass. The background features rolling hills with scattered trees, some showing autumn colors, under a blue sky with light clouds. A small pond is visible on the left side of the image.

45th Annual Production Sale
Private Treaty Auction • At the Farm

Saturday, February 1, 2020

North



Farm Location

3 miles north of Corning, Iowa on Iowa Hwy. 148,
1 mile west on 183rd Street (blacktop),
then 1 mile north on Holly Avenue (rock).

LEAVE 'EM AND BREED 'EM PROGRAM

Heifers not picked up at sale time may be left at Loonans on the "Leave 'Em and Breed 'Em Program."

Loonans will furnish the feed, vaccinate, pelvic measure, breed to calving ease bulls and ultrasound for pregnancy the first of each month on any heifers which have been with the bulls 70 days or more. Turnout date will comply with buyer's request as nearly as possible. All heifers will be turned out by June 10 due to hot weather.

Buyers may then pick up their heifer(s) with pregnancy guaranteed to date of pick up. There is no guarantee beyond pick up time.

The charge is \$1.50 per day from sale day until heifers are confirmed pregnant and the buyer is notified. Ten days after the buyer is notified, the charge will go to \$3.00 per day to encourage prompt pick up.

RED ANGUS • RED SIMMENTAL • RED SIMANGUS™



Judy Loonan
Rick Thompson, Herdsman

Phone: (641) 322-3921

1724 Holly Avenue • Corning, IA 50841

Judy's Cell: (515) 423-5642 • Rick's Cell: (515) 229-0920

E-mail: lsfrra@wildblue.net

Website: www.breedingcattlepage.com/loonan/index.htm

45th Annual Production Sale



Private Treaty Opening Day

Saturday, February 1, 2020

1:00 p.m. sharp in heated building

Lunch: 11:00 a.m. – 12:30 p.m.

Red Angus • Red Simmental • Red SimAngus™

100 Bulls

Purebred and Percentage • Affordably priced at \$2,800, \$3,000 or \$3,200

BULL SALE TERMS

- Buy your bulls February 1 and we'll keep, feed, vaccinate, carcass ultrasound & semen test.
- You may pick up your bulls after testing and prior to June 30 or, Loonans will deliver – free – up to 300 miles when in your area (over 300 miles, please inquire).
- Delivery will begin April 1 and be completed by May 10 when we start our AI season.
- If you cannot take your bulls when deliveries are made in your area, you may pick them up at Loonan's later (prior to June 30). Let us know.
- Bulls not sold February 1 will remain on sale until sold out, as in previous years.
- If you cannot be present February 1, we will have a representative on-hand to handle written and phone requests on a "least cost" basis. Satisfaction guaranteed.

60 Replacement Heifers

PUREBRED HEIFERS & SHOW PROSPECTS

Heifers will be priced individually and in groups – \$800 to \$1,200 (registration available).

RED ANGUS

Purebred individual and group heifers selected to represent our Red Angus program. Dependable, balanced genetics that would make excellent foundation females.

F1 RED ANGUS-SIMMENTAL CROSS

Several individual and group heifers with show or seed-stock potential.

SIMMENTAL

Most are sired by solid red, non-diluter, high-performing sires.

COMMERCIAL

HERD REPLACEMENTS

Heifers will be sold in uniform lots of 2-5 head, unregistered, but eligible, starting at \$800.

F1 RED ANGUS-SIMMENTAL CROSS

We are selling our entire 2019 production of F1 heifers – none held back. This is an outstanding, well-bred set of maternal females.

SIMMENTAL PUREBRED

After 45 years of performance selection, this is quite a set of heifers.

PUREBRED RED ANGUS (UNREGISTERED)

Many younger, moderate-framed heifers which will make good commercial herd replacements or additions to a registered program.

HEIFER SALE TERMS

- All heifers should be paid for sale day. Any not paid for within 30 days will be considered not sold, in order to complete the paperwork. You may pick up your heifers sale day and take them home, or leave them on the "Leave 'em and breed 'em" program. (Please inquire.)
- Thank you for your cooperation. We cannot deliver heifers as we start calving next week.



“Located in the hills of southwest Iowa”

Judy Loonan
Rick Thompson, Herdsman

Phone: (641) 322-3921 • 1724 Holly Avenue • Corning, IA 50841 • Email: lsfrra@wildblue.net
Judy Loonan – (515) 423-5642 (cell) • Rick Thompson – (515) 229-0920 (cell)

Dear Friends;

Judy and I would like to welcome you to our 45th annual production sale – Saturday, February 1st. It has been wonderful interacting with our customers, meeting new friends and raising good cattle - the last 45 years have flown by. Whether you're a first-time buyer or have been with us from the start, we appreciate all of your business.

When I started 24 years ago, Dick told me the story of how they decided to start selling purebred cattle, and at that time it was Simmental. He said he went to the test station to purchase some bulls and saw what they were bringing. He decided that maybe they should be raising bulls rather than buying so that was the start of a program that has been going for 45 years.

Dick and Judy had their first sale at the Corning sale barn and the bulls sold for a whopping three hundred dollars a head. They continued to have the sale at the sale barn for approximately another nine years. It was around that time that Dick and Judy decided to move the sale to the farm, where it has been ever since. They put up a ring and hauled in bleachers and made their own sale facility.

We all know that times change, so this year we are going to do the same. This year the sale will be in the new shed we put up two years ago and the cattle will be shown on a TV screen. Video auctions are becoming the thing to do in production sales. We think it will cut down on some of the labor involved in the setup of the sale. It will also speed up the sale and be a lot warmer - you can thank us later for keeping you warm. The only thing that's changing is that the cattle will not come through the ring. They will still be penned like always for you to look at before the sale. It may be a little crowded, but I think it will be fine.

This year we have joined with Top Dollar Angus to hopefully help you with the marketing of your feeder cattle. Top Dollar will go through our sale bulls and determine if they meet the qualifications to be considered TDA. If you purchase bulls that are TDA qualified and the other sires you have also meet the guidelines, your calves will be eligible for this program. It is just another tool to help you select your seedstock and part of our customer service.

We weaned the calves on the 2nd of September, and they



Judy Loonan

Judy



Rick Thompson

Rick

took off on feed really well considering the silage is fairly wet. The gains have been running around that 3 to 4 pounds a day that's really right where we want them to be. We think that this a really nice set of bulls and females we are offering on February 1st, so please come take a look.

This year there will be six new sire groups to choose from with three of them being AI Sires. On the Red Angus side, we have Full House, which was the top selling bull in Leland Red Angus sale. We don't have many but the ones we do have are nice. Merlin is also out of the Leland herd and they are deep and thick. Liberty is also an AI sire - we only have a couple of these bulls and they are showing some promise. Cardinal is a heifer bull we purchased at Beckton Red Angus. He is a moderate framed bull with loads of thickness, and he has really nice calves.

We also have two new Simmental sires this year, the first being All Along - he came from the Keller Broken Heart Ranch. He has loads of length and muscle and his calves carry the same traits. He is high in calving-ease and is also high performing with a big API. Red Nation was the top selling bull in the Dusty Kunkel Simmental sale, and he has a quiet disposition. He is long-sided and deep-ribbed with a big top and hip to him.

If you are in need of a bull or some heifers, please give us a call – we would be glad to assist in any way. Please feel free to stop by and take a look, we hope to see you on February 1st. Thanks for your time and business.

Thanks,

Judy and Rick

Care and Management of Yearling Bulls

We occasionally receive questions regarding the proper care and management of yearling bulls. The following suggestions came from other seedstock producers and extension beef specialists:

1. Yearling bulls coming off test need to be in good condition in order to withstand the expected 100-300 lbs. weight loss during breeding season. Between the test period and start of breeding season, 8-13 lbs. of grain plus good quality hay or pasture is suggested.
2. During breeding season, young bulls are still growing in addition to their breeding duties. Semen production takes 60 days and poor pasture or inadequate nutrition can severely affect libido, semen quality and quantity.
3. A maximum 60-day breeding season is suggested for yearling bulls, or rotation, to allow them time to rest.

4. Following the 60-day breeding season, proper nutrition can pay big dividends in future development and usefulness of the young bull. This is a very critical age as they start losing their teeth at 18-24 months of age and cannot utilize roughage as well as with permanent teeth. Research indicates that a bull's usefulness as a two-year-old can be retarded if not properly reconditioned after use as a yearling. Feeding 10-15 lbs. of grain (depending on condition) until the bull is two years old, will help recover the lost weight and provide the nutrition needed for continued growth.
5. Annual deworming and treating for lice when needed helps reduce stress and improves feed efficiency.

These guidelines were developed by beef specialist to help maximize the benefits of superior genetics.

Sale Terms & Conditions

Health

Bulls and heifers were vaccinated by a licensed veterinarian as calves, including BovaShield Gold 5 (IBR, PI3, BVD, BRSV) One Shot (Pasteurella, 7-Way, Blackleg and Haemophilus), Inforce 3 intranasal (IBR, PI3, BVD, BRSV), poured for grubs and lice, and dewormed with an oral wormer and Ivomec. The heifers were calfhood vaccinated for brucellosis.

Registration

On registered females, please give your name, address and association number to the clerk and the seller will transfer at no cost to the buyer. On bulls, seller will pay this cost if you desire registration papers. Please notify the clerk.

Sale Procedure

- All cattle are priced in the catalog at affordable prices.
- No cattle are sold or reserved prior to 1 p.m., Saturday, February 1, 2020.

Sale Order

Bulls will sell first, starting promptly at 1 p.m., Feb. 1, 2020. *None are sold or reserved ahead of time.* We plan a 15-minute break following the opening round of the bull sale to allow buyers who need additional bulls to make their selections.

Heifers will sell following the break at approximately 3 p.m. and will be sold under the same procedures as the bulls. If you have any questions, give Judy or Rick a call.

Selling Procedure

Cattle are ready for inspection now. All are affordably priced in the catalog. Please register as you arrive February 2. Sale order will be determined by the buyer in order of registration. If your selection is called to the ring prior to your buyer number being called, you will have the privilege of raising the bid. Normally, some bulls sell at the listed price and some bring more if several buyers are interested in the same animal, but every buyer has an equal opportunity to buy the bull of their choice.

If you cannot attend February 1, we can make arrangements to have someone represent you on a least-cost basis. Satisfaction guaranteed.

Guarantee

All cattle carry the standard breeding guarantee of the respective breed association. Bulls will be semen evaluated with a certificate furnished. Bulls will be wintered on a high roughage test ration, semen tested and ultrasound scanned in March. You may pick up your bulls beginning April 1 or Loonans will deliver when in your area. Most deliveries are made April 1 to May 10. Please contact Loonans on cost of deliveries over 300 miles.

Motels

Creston, IA (25 mi. east)	
Super 8	641-782-6541
Red Oak, IA (30 mi. west)	
Super 8	712-623-6919
Adair, IA (36 mi. north)	
Jesse James Super 8	641-742-5251

RED ANGUS GUIDE TO EPDS

- HB** – HerdBuilder is a maternally focused selection index that predicts the probability of developing profitable cowherd traits while maximizing the value of marketed progeny. Expressed as dollars per cow exposure, HB is calculated based on the scenario that bulls are mated to heifers and cows, replacement heifers are retained, and all remaining progeny are marketed on a quality-based carcass grid. (Index/High Value)
- GM** – GridMaster is a terminally focused selection index that predicts the probability to increase the value of marketed calves. GM places selection pressure on growth, feedyard performance and carcass quality, predicting differences in profit as expressed per cow exposure. GM is calculated based on the scenario that bulls are mated to cows only, and all progeny are marketed on a quality-based carcass grid. (Index/High Value)
- CED** – Calving Ease Direct predicts differences in the percent of calves born unassisted out of 2-year-old dams. (Percent/High Value)
- BW** – Birth Weight predicts differences in actual birth weight of progeny. (Pounds/Low Value)
- WW** – Weaning Weight predicts differences in 205-day weaning weight. (Pounds/High Value)
- YW** – Yearling Weight predicts differences in 365-day yearling weight. (Pounds/High Value)
- ADG** – Average Daily Gain predicts differences in weight gain between 205 and 365 days of age. (Pounds/High Value)
- DMI** – Dry Matter Intake predicts differences in daily feed intake as measured in a feedlot during the post-weaning period. (Pounds/Low Value)
- MILK** – Milk predicts differences in weaning weight attributed to the milking ability of the animal's daughters. (Pounds/High Value)
- HPG** – Heifer Pregnancy predicts differences in the percent of daughters who are able to conceive and calve at 2 years of age following exposure to breeding. (Percent/High Value)
- CEM** – Calving Ease Maternal predicts differences in the percent of daughters who are able to calve unassisted as 2-year-old heifers. (Percent/High Value)
- STAY** – Stayability predicts differences in the ability of an animals' retained daughters to remain productive in the herd – calve every year – through 6 years of age. (Percent/High Value)
- MARB** – Marbling predicts differences in marbling score – amount of intramuscular fat measured at the 13th rib. (Marbling Score Units/High Value)
- YG** – Yield Grade predicts differences in USDA Yield Grade, which is calculated using CW, REA and Fat. (Yield Grade Units/Low Value)
- CW** – Carcass Weight predicts differences in actual hot carcass weight. (Pounds/High Value)
- REA** – Ribeye Area predicts differences in square inches of ribeye area measured at the 13th rib. (Square Inches/High Value)
- FAT** – Fat predicts differences in the depth of backfat measured between the 12th and 13th ribs. (Inches/Low Value)

Ranch Tested. Rancher Trusted.

Red Angus

For more information, visit RedAngus.org.



Top Dollar Angus Feeder Calf Program



Top Dollar Angus is a genetic-certification and marketing company focused exclusively on the top 25% of the industry in carcass and growth Angus and Red Angus-influenced feeder cattle. Top Dollar Angus is a program similar to other popular branded-beef programs, except that Top Dollar Angus does its branding in the feeder cattle and calf market.

Qualified herds must have two or more generations of Angus (Black or Red) genetics with growth and carcass traits objectively ranking in the top 25% of the breed based on documented historical sire use. DNA evaluation conducted by Zoetis or GeneSeek is another workable method to qualify. Once your cattle have met the necessary requirements, they will be marketed under the Top Dollar Angus brand and logo, and will be promoted aggressively to a large number of feed yards and buyers. In today's market, Top Dollar Angus cattle are seeing premiums ranging from \$30 to \$70 per head above the average market.

Why the premium? Cattle feeders know that Top Dollar Angus cattle perform better and have higher grid-based carcass rewards compared to other cattle. This puts more dollars per head into the cattle feeder's pocket, which can be passed back to the producer in the form of premiums paid above market price.

Top Dollar Angus helps take the guess work and surprises out of growing and feeding cattle. Feed yards are tired of unpredictable performance and wide-ranging profitability results from group to group on cattle they purchase. Cattle often look the same and have the same colored hides, but are very different genetically. That's why the genetic certification of high-end Angus and Red Angus feeder cattle is here! The industry must differentiate the best Angus and Red Angus genetics from average cattle, and that's what Top Dollar Angus will do for you!

If you have consistently invested in high-performance Angus or Red Angus genetics, Top Dollar Angus will make your cattle stand out from the pack and get you the premiums you deserve. No matter how you market your cattle, our goal is to create more demand and higher prices for your calves.



Jared Wareham,
general manager
660-492-2777

jared@topdollarangus.com



Kacey Jacobson,
field representative
701-391-4646

kacey@topdollarangus.com

www.topdollarangus.com



Red Angus Herdsires



POKE BIG JON 3029 5038

BD: RAAA REG. BW: WW: YW: CATEGORY:
 2/13/15 3477749 82 700 1438 1A 100%

SR JONNY UNITAS 55Y

TR COLT 45 UT806
 7U MISSION LOU 9927

HLH MS JULIAN 1009 3029

RED HILL B571 JULIAN 84S
 POKE MS BIG SKY 9197 1009

HB	GM	CED	BW	WW	YW	ADG	DMI	M	ME	HPG	CEM	ST	MARB	YG	CW	REA	FAT
185	51	5	1.7	66	110	0.28	1.40	26	-1	16	2	18	0.37	-0.02	39	0.39	-0.01
34%	17%	99%	94%	19%	13%	10%	85%	18%	47%	7%	97%	19%	64%	6%	10%	8%	4%

- More of the body and style of Totem
- Long-sided, deep-ribbed bull that should put pounds on your calves
- Should add a little more frame



CRS DIAMND BRILLIANCE 3212

BD: RAAA REG. BW: WW: YW: CATEGORY:
 5/12/13 1664469 74 661 911 1A 100%

CRS DIAMND LUSTER 065

BHR COPPER D 773
 PANHANDLE SANDCHERRY 125

CRS DIAMND STRAWBERRY 188

SRR EXT 9106
 PANHANDLE NINA 2122

HB	GM	CED	BW	WW	YW	ADG	DMI	M	ME	HPG	CEM	ST	MARB	YG	CW	REA	FAT
189	50	16	-3.6	59	102	0.27	1.41	31	1	7	7	18	0.52	0.16	30	0.12	0.04
28%	31%	13%	14%	43%	26%	13%	85%	4%	59%	95%	56%	27%	30%	74%	28%	37%	81%

- Lots of natural thickness
- WR 114, YR 110
- Out of a 2-year-old heifer
- Dam has an MPPA of 104.6



SR IMPRESSION C303

BD: RAAA REG. BW: WW: YW: CATEGORY:
 4/26/15 3520754 67 676 863 1A 100%

MUSHRUSH IMPACT Z352

MUSHRUSH IMPRESSIVE CA U236
 MUSHRUSH ZENA JL X320

KCAB KINDLE A30

BROWN COVENANT U7548
 KINDLE 5366

HB	GM	CED	BW	WW	YW	ADG	DMI	M	ME	HPG	CEM	ST	MARB	YG	CW	REA	FAT
239	48	18	-6.3	62	92	0.19	1.04	21	1	10	8	23	0.50	0.10	2	-0.05	0.05
1%	56%	4%	1%	32%	48%	67%	58%	61%	57%	64%	27%	1%	34%	44%	97%	72%	83%

CRS DIAMND SOVEREIGN 5282

BD: RAAA REG. BW: WW: YW: CATEGORY:
 4/28/15 3514653 76 552 791 1A 100%

CRUMP SOVEREIGN 3190

LSF RAB SOVEREIGN X7780
 CRUMP AMBER Y187

3255

5L HARD ROCK 2188-09X
 PANHANDLE PIPER 013

HB	GM	CED	BW	WW	YW	ADG	DMI	M	ME	HPG	CEM	ST	MARB	YG	CW	REA	FAT
194	48	18	-3.8	55	84	0.18	0.42	23	-2	14	10	16	0.29	0.07	1	-0.26	0.01
22%	61%	5%	12%	61%	69%	75%	14%	41%	37%	17%	10%	51%	81%	27%	97%	96%	9%

- Calving-ease sire
- This will be the last year for Sovereign calves as he got in a bull fight and lost.
- Outcross pedigree

BSF HERITAGE A533 C3

BD: RAAA REG. BW: WW: YW: CATEGORY:
 3/31/13 1625877 69 587 1094 1B 99.9%

BECKTON HERITAGE X356 E2

BECKTON HERITAGE N013
 BECKTON LANA S489 EP

BSF LAUREL U563 CT

BECKTON CLIFFTOP T3 N800
 BSF LAUREL N239 LN

HB	GM	CED	BW	WW	YW	ADG	DMI	M	ME	HPG	CEM	ST	MARB	YG	CW	REA	FAT
158	48	18	-6.4	52	81	0.18	0.30	21	-4	9	9	13	0.38	0.15	13	-0.15	0.03
82%	66%	8%	2%	77%	79%	77%	16%	69%	25%	78%	26%	90%	52%	69%	63%	71%	65%

Red Angus Herdsires



BSF CLIFFTOP C186 J5

BD: RAAA REG. BW: WW: YW: CATEGORY:
 3/11/15 3487748 65 601 1129 1B 99.9%

BECKTON CLIFFTOP Y012 C4 | BECKTON CLIFFTOP W692 E3
 BECKTON LANA W240 C

BSF ERICA Y140 J | BECKTON JULIAN W841 J5
 BSF ERICA W053 R

HB	GM	CED	BW	WW	YW	ADG	DMI	M	ME	HPG	CEM	ST	MARB	YG	CW	REA	FAT
149	48	15	-3.9	59	94	0.22	0.48	28	-6	9	6	13	0.30	0.31	27	-0.37	0.05
83%	59%	19%	11%	46%	44%	42%	16%	10%	18%	85%	65%	86%	80%	99%	37%	99%	83%

- New heifer bull
- Lots of thickness and his calves are stout
- We have had calls from customers who purchased Clifftop sons in our 2018 sale to make sure more will be available in 2019 because they like them so much.



BSF LOKI D710 W5

BD: RAAA REG. BW: WW: YW: CATEGORY:
 4/12/16 3551306 71 594 1116 1B 99.9%

BECKTON LOKI X833 H4 | BECKTON LOKI CL S284
 BECKTON VERNICE T447 HT

BSF CODETTE Z834 W | BECKTON WARRIOR W534 N4
 BSF CODETTE U860 CD

HB	GM	CED	BW	WW	YW	ADG	DMI	M	ME	HPG	CEM	ST	MARB	YG	CW	REA	FAT
160	47	19	-6.7	47	74	0.17	0.54	26	-6	10	9	13	0.41	0.18	17	-0.17	0.04
72%	79%	2%	1%	87%	85%	78%	19%	19%	20%	63%	15%	84%	54%	85%	68%	90%	71%

- Calving-ease sire



BECKTON SCAMP B504 H5

BD: RAAA REG. BW: WW: YW: CATEGORY:
 3/29/14 1706277 60 585 1128 1A 100%

BECKTON SCAMP Z460 L4 | BECKTON SCAMP X458 H3
 BECKTON BELGA W405 L

BECKTON INDIGO Z814 H | BECKTON HERITAGE X403 L3
 BECKTON INDIGO W165 N

HB	GM	CED	BW	WW	YW	ADG	DMI	M	ME	HPG	CEM	ST	MARB	YG	CW	REA	FAT
167	47	20	-8.0	49	75	0.16	0.03	29	-8	14	10	13	0.24	0.14	14	-0.15	0.03
62%	73%	2%	1%	83%	84%	83%	4%	6%	14%	21%	10%	87%	89%	68%	78%	88%	49%

- Calving-ease sire
- We buy consistency to breed consistency. Compare his EPDs to his sire's and dam's EPDs in the chart:

EPDs	Ind.	Sire	Dam
CED	20	20	16
BW	-8.0	-5.5	-5.8
WW	49	42	51
YW	75	66	78
Milk	29	27	29

BECKTON EPIC D636 N4

BD: RAAA REG. BW: WW: YW: CATEGORY:
 4/5/16 3551846 90 611 1221 1A 100%

BECKTON EPIC Z674 E6 | BECKTON EPIC U749 D5
 BECKTON INDIGO U504 EP

BECKTON LANA Y022 N | BECKTON NEBULA W486 D3
 BECKTON LANA W164 R

HB	GM	CED	BW	WW	YW	ADG	DMI	M	ME	HPG	CEM	ST	MARB	YG	CW	REA	FAT
156	50	13	-1.5	57	103	0.29	1.25	24	-3	10	6	13	0.41	0.19	21	-0.02	0.05
76%	29%	39%	46%	55%	24%	7%	76%	36%	32%	66%	63%	81%	54%	86%	56%	66%	90%

- Different Beckton Epic line



Red Angus Herdsires



BECKTON CARDINAL E372 S

BD: RAAA REG. BW: WW: YW: CATEGORY:
3/22/17 3776761 66 567 939 1A 100%

TR DOUBLE EAGLE ZT220

TR RICARDO DOS
BECKTON LANA U182 JC

BECKTON SIERRA Z353 S

BECKTON SCAMP X494 E3
BECKTON SIERRA X555 N

HB	GM	CED	BW	WW	YW	ADG	DMI	M	ME	HPG	CEM	ST	MARB	YG	CW	REA	FAT
178	47	24	-9.4	44	68	0.15	0.36	28	-4	12	14	13	0.32	0.01	3	0.18	0.04
44%	76%	1%	1%	91%	91%	88%	12%	11%	28%	33%	1%	86%	75%	9%	96%	27%	65%

- Calving-ease bull
- Thick and moderate framed
- Great phenotype



WFL MERLIN 018A

BD: RAAA REG. BW: WW: YW: CATEGORY:
1/19/13 1628086 63 676 1156 1A 100%

LJC MERLIN T179

LJC MISSION STATEMENT P27
BUF CRK REDPRIDE N179

WFL COMMITMENT 042Y

BROWN COMMITMENT S7206
WFL JEWELMAKER 9024

HB	GM	CED	BW	WW	YW	ADG	DMI	M	ME	HPG	CEM	ST	MARB	YG	CW	REA	FAT
211	55	15	-3.8	82	130	0.30	1.14	26	0	10	9	17	0.64	0.05	32	0.30	0.02
7%	2%	19%	12%	2%	2%	5%	67%	21%	50%	62%	19%	40%	14%	19%	22%	14%	29%

- New AI bull with limited calves



FEDDES LIBERTY D210

BD: RAAA REG. BW: WW: YW: CATEGORY:
1/22/16 3539663 74 709 1181 1A 100%

5L INDEPENDENCE 560-298Y

BUF CRK THE RIGHT KIND U199
5L BLACK ADINA 525-560

FEDDES SLEEK 806

BIEBER ROMERO 9136
FEDDES SLEEK 2S

HB	GM	CED	BW	WW	YW	ADG	DMI	M	ME	HPG	CEM	ST	MARB	YG	CW	REA	FAT
189	52	15	-2.1	65	106	0.26	1.03	23	-4	15	7	15	0.60	0.06	11	-0.17	0.00
28%	8%	19%	35%	23%	19%	18%	57%	45%	28%	13%	42%	67%	18%	23%	86%	90%	5%

- New AI bull with limited calves



LELAND FULL HOUSE 7465

BD: RAAA REG. BW: WW: YW: CATEGORY:
3/28/17 3767175 85 773 1479 1A 100%

WFL MERLIN 018A

LJC MERLIN T179
WFL COMMITMENT 042Y

LELANDEXCELL 223-4439

VGW EXCELL 223
LELAND BEN 160X

HB	GM	CED	BW	WW	YW	ADG	DMI	M	ME	HPG	CEM	ST	MARB	YG	CW	REA	FAT
157	56	8	0.7	79	133	0.33	0.93	22	5	9	4	13	0.66	0.15	44	0.17	0.02
76%	1%	89%	86%	2%	1%	1%	48%	54%	87%	80%	89%	87%	12%	70%	5%	29%	36%

- New AI bull with limited calves



Red Angus Herdsires



	HB	GM	CED	BW	WW	YW	ADG	DMI	MILK	ME	HPG	CEM	STAY	MARB	YG	CW	REA	FAT
CURRENT BREED AVERAGES	173	49	12	-1.36	58	91	0.21	0.93	22	-1	11	7	15.79	0.44	0	23	0.08	0.03
POKE BIG JON 3029 5038	185	51	5	1.7	66	110	0.28	1.40	26	-1	16	2	18	0.37	-0.02	39	0.39	-0.01
Accuracy			54	70	66	65	65	26	45	0	25	30	27	42	38	52	48	34
Breed Rank	34	17%	99%	94%	19%	13%	10%	85%	18%	47%	7%	97%	19%	64%	6%	10%	8%	4%
CRS DIAMND BRILLIANCE 3212	189	50	16	-3.6	59	102	0.27	1.41	31	1	7	7	18	0.52	0.16	30	0.12	0.04
Accuracy			33	64	59	58	58	23	38	17	18	24	15	22	28	40	36	23
Breed Rank	28	31%	13%	14%	43%	26%	13%	85%	4%	59%	95%	56%	27%	30%	74%	28%	37%	81%
SR IMPRESSION C303	239	48	18	-6.3	62	92	0.19	1.04	21	1	10	8	23	0.50	0.10	2	-0.05	0.05
Accuracy			55	67	64	63	63	30	45	4	24	30	29	45	37	51	46	37
Breed Rank	1	56%	4%	1%	32%	48%	67%	58%	61%	57%	64%	27%	1%	34%	44%	97%	72%	83%
CRS DIAMND SOVEREIGN 5282	194	48	18	-3.8	55	84	0.18	0.42	23	-2	14	10	16	0.29	0.07	1	-0.26	0.01
Accuracy			52	62	57	56	56	19	40	0	29	23	21	37	35	47	41	35
Breed Rank	22	61%	5%	12%	61%	69%	75%	14%	41%	37%	17%	10%	51%	81%	27%	97%	96%	9%
BSF HERITAGE A533 C3	147	48	18	-6.5	50	82	0.19	0.56	24	-6	5	9	12	0.44	0.15	16	-0.09	0.04
Accuracy			37	70	66	65	65	25	32	18	7	25	18	26	24	39	33	14
Breed Rank	85	54%	4%	1%	78%	73%	63%	20%	38%	19%	98%	17%	90%	47%	69%	74%	79%	65%
BSF CLIFFTOP C186 J5	149	48	15	-3.9	59	94	0.22	0.48	28	-6	9	6	13	0.30	0.31	27	-0.37	0.05
Accuracy			34	66	61	61	61	24	28	18	7	20	17	24	27	41	34	19
Breed Rank	83	59%	19%	11%	46%	44%	42%	16%	10%	18%	85%	65%	86%	80%	99%	37%	99%	83%
BSF LOKI D710 W5	160	47	19	-6.7	47	74	0.17	0.54	26	-6	10	9	13	0.41	0.18	17	-0.17	0.04
Accuracy			25	56	50	46	46	18	23	3	7	16	14	21	23	34	29	16
Breed Rank	72	79%	2%	1%	87%	85%	78%	19%	19%	20%	63%	15%	84%	54%	85%	68%	90%	71%
BECKTON SCAMP B504 H5	167	47	20	-8.0	49	75	0.16	0.03	29	-8	14	10	13	0.24	0.14	14	-0.15	0.03
Accuracy			39	67	61	60	60	28	31	4	7	24	10	28	28	42	39	19
Breed Rank	62	73%	2%	1%	83%	84%	83%	4%	6%	14%	21%	10%	87%	89%	68%	78%	88%	49%
FEDDES LIBERTY D210	189	52	15	-2.1	65	106	0.26	1.03	23	-4	15	7	15	0.60	0.06	11	-0.17	0.00
Accuracy			61	76	71	68	68	29	50	19	30	34	29	43	44	55	56	46
Breed Rank	28	8%	19%	35%	23%	19%	18%	57%	45%	28%	13%	42%	67%	18%	23%	86%	90%	5%
BECKTON EPIC D636 N4	156	50	13	-1.5	57	103	0.29	1.25	24	-3	10	6	13	0.41	0.19	21	-0.02	0.05
Accuracy			27	56	50	49	49	21	27	17	0	19	16	19	25	36	31	21
Breed Rank	76	29%	39%	46%	55%	24%	7%	76%	36%	32%	66%	63%	81%	54%	86%	56%	66%	90%
BSF NEBULA U049 PJ	208	48	19	-6.1	51	83	0.20	0.56	21	3	11	7	19	0.38	0.12	6	-0.12	0.04
Accuracy			44	79	74	75	75	30	57	49	10	40	37	27	29	48	43	14
Breed Rank	9	54%	2%	1%	76%	70%	60%	21%	63%	76%	56%	44%	14%	61%	53%	93%	84%	67%
LELAND FULL HOUSE 7465	157	56	8	0.7	79	133	0.33	0.93	22	5	9	4	13	0.66	0.15	44	0.17	0.02
Accuracy			55	71	67	64	64	19	46	0	38	28	25	33	37	51	45	36
Breed Rank	76	1%	89%	86%	2%	1%	1%	48%	54%	87%	80%	89%	87%	12%	70%	5%	29%	36%
BECKTON EMCEE Z289 J3	148	47	20	-8.4	41	61	0.13	-0.18	31	-6	10	8	12	0.38	0.08	-2	-0.12	0.03
Accuracy			29	55	51	50	50	23	28	18	8	20	16	22	25	37	32	18
Breed Rank	84	72%	1%	1%	94%	96%	95%	2%	3%	19%	70%	35%	91%	61%	29%	98%	84%	58%
BECKTON CARDINAL E372 S	178	47	24	-9.4	44	68	0.15	0.36	28	-4	12	14	13	0.32	0.01	3	0.18	0.04
Accuracy			28	50	44	43	43	11	23	21	6	17	13	19	24	35	30	18
Breed Rank	44	76%	1%	1%	91%	91%	88%	12%	11%	28%	33%	1%	86%	75%	9%	96%	27%	65%
WFL MERLIN 018A	211	55	15	-3.8	82	130	0.30	1.14	26	0	10	9	17	0.64	0.05	32	0.30	0.02
Accuracy			76	90	87	87	87	60	66	66	43	56	34	48	44	62	57	39
Breed Rank	7	2%	19%	12%	2%	2%	5%	67%	21%	50%	62%	19%	40%	14%	19%	22%	14%	29%

For more information on Red Angus EPDs, visit to rredangus.org/genetics. EPDs displayed as of 1-3-20.

HB = HerdBuilder Index
GM = GridMaster
CED = Calving Ease Direct
BW = Birth Weight

WW = Weaning Weight
YW = Yearling Weight
ADG = Average Daily Gain
DMI = Dry Matter Intake

Milk = Daughter's Milk
ME = Maintenance Energy
HPG = Heifer Pregnancy

CEM = Calving Ease Maternal
Stay = Stayability

Marb = Marbling Score
REA = Ribeye Area
Fat = 12th Rib Back Fat



HSR DAKOTA BEEF U653

BD: ASA REG. BW: WW: YW:
3/11/08 2454850 799 1380 Red Polled

WS BEEF MAKER R13

HOOKS SHEAR FORCE 38K
 DCR MS RIBEYE N72

HSR MISS SUNRISE S351

MLC DAKOTA SUNRISE P32
 HSR MISS REALITY N13

CE	BW	WW	YW	ADG	MCE	MK	MMW	ST	DOC	CW	YG	MARB	BF	REA	API	TI
11.3	2.5	93.8	156.50	39.6	9.9	21.0	67.9	23.8	11.6	58.5	-0.51	0.20	-0.106	1.39	161.7	89.9
35%	75%	1%	1%	1%	25%	60%	3%	1%	35%	1%	25%	15%	65%	1%	1%	1%

- HSR Dakota Beef U653 topped the Dakota Xpress Sale in North Dakota at \$12,000 when we bought him.
- Dakota is moderate framed, deep bodied and had a 114 WW ratio and a 112 YW ratio.
- He makes a great combination on our own many Earthquake daughters, ranking in the top 1% for WW, YW, ADG, CW, REA, APR and TI, top 5% for MMW, 2% ST, 10% MA.
- Dakota not only has breed-leading EPDs, but his calves are impressive here.
- The four consignors at the Dakota Xpress sale commented, "He's better than the A.I. bulls." So before we could get him picked up, they collected him and divided the semen.



RFS CLINT C45

BD: ASA REG. BW: WW: YW:
3/19/15 3040615 858 1336 Red Polled

ELLINGSON COMPLETE A358

R PLUS HARD ROCK 145X
 ELLINGSON MS AMIGO X5

RFS MISS Z198

RFS T46
 U206

CE	BW	WW	YW	ADG	MCE	MK	MMW	ST	DOC	CW	YG	MARB	BF	REA	API	TI
0.2	6.1	79.2	116.00	23.1	2.2	12.8	52.3	16.4	5.4	25.8	-0.51	-0.14	-0.133	0.75	97.4	63.7
99%	99%	10%	15%	35%	99%	99%	75%	70%	95%	65%	25%	95%	10%	75%	99%	80%

- Lots of eye appeal in his calves that exhibit thickness
- He has four of the top five calves in 205-day adjusted weights out of 39 head.

UNDERSTANDING AND USING ASA'S SELECTION INDICES

By Wade Schafer Ph.D.

API. The API evaluates sires being used on the entire cowherd (bred to both Angus first-calf heifers and mature cows) with a portion of their daughters being retained for breeding and the steers and remaining heifers being put on feed and sold grade and yield. All EPDs, with the exception of tenderness, are taken into consideration in this index.

API puts heavy emphasis on bulls with good STAY (an estimate of the likelihood of a bull's daughters staying in the herd). This should come as no surprise; research has consistently shown that reproduction trumps all else in economic importance. STAY improves your bottom line by lessening the need for replacement females. Reducing your requirement for replacements allows you to market more young, high-value females, cuts your costs for heifer development and changes your herd's age structure so a larger portion of your females are in their most productive years (5 through 10).

Direct and maternal calving ease also get substantial weighting in the API. This is because they are strongly associated to calf survivability and, to a lesser degree, female longevity. Given that milk is essentially neutral in the index (the top 25 API bulls are only in the top 40% for milk), we can conclude that the benefits of increased weaning weight due to milk is negated by the additional cost associated with increased milk production.

It may be difficult for breeders to accept that the API places downward selection pressure on growth, as it is counter to the direction taken in most

breeding programs. Though increasing growth is invariably a good thing in terminal sires, its strong association with mature size makes it less desirable in replacement female sires, as increasing mature size increases cowherd maintenance requirements. Keep in mind that the positive benefits of increased growth in sires' steers and cull females are accounted for in the API. Nevertheless, the index is telling us that the extra cost of maintaining larger cows outweighs the benefit of increased growth in other areas of the system.

Even so, the API is evidently finding sires with more carcass weight than would be expected given their growth potential. (The top 25 average in the 95th and 90th percentiles for weaning and yearling weight, while reaching the 70th percentile for carcass weight.)

From the top 25, it is evident that more weight is placed on marbling than yield grade. This is likely because there is no financial incentive to improving yield grade unless there is a problem (i.e. yield grades reach 4); for the most part, due to Simmentals superior yielding ability, SimAngus half-bloods see few discounts for yield grade.

TI. The TI is designed for evaluating sires' economic merit in situations where they are bred to mature Angus cows and all offspring are placed in the feedlot and sold grade and yield. Consequently, maternal traits such as milk, stayability and maternal calving ease are not considered in the index.

Simmental Herdsires



KBHR ALL ALONG E082

BD: ASA REG. BW: WW: YW:
3/21/17 3312076 96 812 1472 Red Homo Pld

WS ALL ABOARD B80

WS ALL-AROUND Z35
WS LITTLE SISTER W37

KBHR A054

GW REDESTINED 642X
KBHR N150

CE	BW	WW	YW	ADG	MCE	MK	MMW	ST	DOC	CW	YG	MARB	BF	REA	API	TI
10.4	1.8	91.9	136.3	0.28	5.9	20.0	65.9	16.0	15.7	55.7	-0.51	0.31	-0.128	1.20	147.8	90.9
45%	55%	1%	1%	10%	40%	70%	5%	75%	3%	1%	25%	4%	20%	2%	5%	1%

- Thick, long-bodied calves
- Calves follow same type as our past bulls like Earthquake, Dakota and Clint
- Calving Ease
- Big Growth



DKSR MR RED NATION E73

BD: ASA REG. BW: WW: YW:
3/9/17 3330840 80 800 1322 Red Homo Pld

KLSR RED NATION C545

THR NORTHERN 2109
DSR PASSION U1

BGL MISS ALL IN B167B

WS ALL IN W111
BGL ZAHARA Z159B

CE	BW	WW	YW	ADG	MCE	MK	MMW	ST	DOC	CW	YG	MARB	BF	REA	API	TI
12.6	-0.1	79.3	105.9	0.17	6.6	27.1	66.6	18.1	11.2	33.2	-0.37	-0.03	-0.114	0.58	131.6	76.6
20%	15%	10%	40%	85%	30%	10%	4%	40%	40%	30%	95%	70%	45%	99%	30%	15%

- Thick, easy-fleshing calves
- Outcross pedigree
- High Calving Ease
- Great Growth
- Great Disposition

CURRENT BREED AVERAGES:	CE	BW	WW	ADG	YW	MCE	MK	MMW	ST	DOC	CW	YG	MARB	BF	REA	API	TI
	10.0	1.8	67.8	0.2	100.6	5.2	21.6	55.6	17.4	10.5	28.3	-0.46	0.01	-0.11	0.82	123.77	68.93
HSR DAKOTA BEEF U653	11.3	2.5	93.8	156.5	0.39	6.9	21.0	67.9	23.8	11.6	58.5	-0.51	0.20	-0.106	1.39	161.7	89.9
Accuracy	0.41	0.73	0.69	0.69	0.69	0.39	0.57	0.57	0.38	0.22	0.53	0.34	0.35	0.24	0.47		
Breed Rank	35%	75%	1%	1%	1%	25%	60%	3%	1%	35%	1%	25%	15%	65%	1%	1%	1%
RFS CLINT C45	0.2	6.1	79.2	116.0	0.23	1.2	12.8	52.3	16.4	5.4	25.8	-0.51	-0.14	-0.133	0.75	97.4	63.7
Accuracy	0.50	0.65	0.63	0.63	0.63	0.25	0.45	0.46	0.24	0.28	0.49	0.36	0.45	0.31	0.47		
Breed Rank	99%	99%	10%	15%	35%	99%	99%	75%	70%	95%	65%	25%	95%	10%	75%	99%	80%
KBHR ALL ALONG E082	10.4	1.8	91.9	136.3	0.28	5.9	20.0	65.9	16.0	15.7	55.7	-0.51	0.31	-0.128	1.20	147.8	90.9
Accuracy	0.33	0.53	0.49	0.47	0.47	0.23	0.28	0.29	0.21	0.29	0.41	0.31	0.34	0.29	0.38		
Breed Rank	45%	55%	1%	1%	10%	40%	70%	5%	75%	3%	1%	25%	4%	20%	2%	5%	1%
DKSR MR RED NATION E73	12.6	-0.1	79.3	105.9	0.17	6.6	27.1	66.6	18.1	11.2	33.2	-0.37	-0.03	-0.114	0.58	131.6	76.6
Accuracy	0.20	0.41	0.37	0.37	0.37	0.16	0.19	0.21	0.13	0.24	0.29	0.19	0.13	0.11	0.27		
Breed Rank	20%	15%	10%	40%	85%	30%	10%	4%	40%	40%	30%	95%	70%	45%	99%	30%	15%
CE = Calving Ease	MCE = Maternal Calving Ease	DOC = Docility	REA = Ribeye Area														
BW = Birthweight	MM = Daughter's Milk	CW = Carcass Weight	SHR = Shear Force														
WW = Weaning Weight	MMW = Maternal Weaning Weights	YG = Yield Grade	API = All-Purpose Index														
YW = Yearling Weight	ST = Stayability	Marb = Marbling Score	TI = Terminal Index														
ADG = Average Daily Gain		BF = 12th Rib Back Fat															

Red Angus Sale Bulls



R3W – Full House son gaining 3.87 lbs/day



R7W – 6.1 frame Big Jon son



R13W – Two-star calving-ease Clifftop son



R16W – 57# BW bull, 106 weaning ratio



R21W – Impression son, Dam's MPPA: 104



R22W – 76# BW, 121 weaning ratio

Red Angus Sale Bulls



R33W – Weaning ratio 117, first-calf heifer



R34W – Deep-bodied Clifftop son



R38W – 6 frame Sovereign son



R57W – Two-star calving-ease Clifftop son



R60W – Moderate cow family, 73# BW



R75W – Big Jon x Totem, 6 frame bull

THRIVE



Position your ranch to thrive with Red Angus-sired calves.

Red Angus bulls unlock premiums by siring calves with a market advantage that buyers appreciate both in the feedlot and the replacement heifer pen. Plus, the Feeder Calf Certification Program yellow tag adds another layer of price advantage through genetic, age and source verification. Thrive on sale day with Red Angus.

Ranch Tested. Rancher Trusted.

Red Angus
RedAngus.org

Red Angus Sale Bulls



Tag	Sire	Poll	Birth	Birth	9-3	205	10-23	49	11-20	28	12-17	27	105	Price		
		Horn	Date	Wt.	Wt.	Adj.	Wt.	Day	Wt	Day	Wt.	Day	Day			
						Wt.		ADG	ADG		ADG	ADG	ADG			
R1w	LIBERTY D210	P	2/14/19	80	566	597	724	3.22	838	4.07	934	3.56	3.5	\$3,200		
	4150196		BSF Nebula U049 (2188C) x Beckton Hasten W753 (1723Y) x Beckton Hustler N859 (1504W) x 908P													
	PB IB 99.9%		C.E.	16 *	B.W.	-3	W.W.	62	Y.W.	98	M.E.	-1	MILK	23	STAY	18
	CARCASS		Dam:	17		-4.1		54		83		1		24		20
	MA .52		Sire:	15		-2		70		114		-4		22		16
	RE -.04		BW History of Dam on 3 Calves: Range 64-80 Ave. 69#													
	BF .02		HB 208 GM 50 Weaning ratio of 109 and his dam has a MPPA of 103. A maternal brother has a Rib Eye of 13.82, Choice marbling. He is in the top 6% for CED, and 10% for both Herd Builder and Birthweight in the breed.													
R2w	IMPRESSION	P	2/15/19	50	512	523	672	3.27	776	3.71	858	3.04	3.3	\$3,200		
	4150232		Beckton Accent W226 (2237D) x Beckton Warrior R577 (1578X) x MTN View Robinhood R987 (849N)													
	PB IA 100%		C.E.	17 *	B.W.	-4.3	W.W.	55	Y.W.	89	M.E.	0	MILK	21	STAY	21
	CARCASS		Dam:	14		-1.2		58		100		0		22		19
	MA .43		Sire:	20		-7.5		52		78		1		21		22
	RE .00		BW History of Dam on 3 Calves: Range 50-90 Ave. 67#													
	BF .04		HB 217 GM 48 One star because of his pedigree as Beckton Warrior is a performance bull and his dam had a calf with a birthweight of 90#. His dam has a birthweight EPD of only -1.2 which isn't enough to be either a two or three star calving ease bull. A maternal brother has a Rib Eye of 13.46, Choice marbling. Dam has a MPPA of 105. Top 2% of the breed for Herd Builder and Stay, 7% for CED and 8% for Birthweight.													
R3w	FULLHOUSE	P	2/17/19	87	512	534	726	4.37	832	3.79	918	3.19	3.87	\$3,200		
	4150140		Beckton Accent W226 (2054B) x TR Julian PT427 (1376U) x LFSR Hill Country 2LW (1063R)													
	PB 1A 100%		C.E.	15 *	B.W.	-2.2	W.W.	64	Y.W.	105	M.E.	-3	MILK	23	STAY	19
	CARCASS		Dam:	15		-2.3		58		96		-1		24		21
	MA .60		Sire:	15		-2		70		114		-4		22		16
	RE -.08		BW History of Dam on 4 Calves: Range 58-87 Ave. 72#													
	BF .02		HB 212 GM 52 Bull with eye appeal. A maternal brother has a Rib Eye of 13.22, Choice Plus marbling. There is longevity in this family as we still have the 1063R grand dam and she is 14 years old. Bred alike EPD's and a bull that keeps on gaining.													
R4w	CLIFFTOP C186	P	2/17/19	77	474	487	592	2.41	706	4.07	794	3.26	3.05	\$3,200		
	4150064		BSF Nebula U049 (1837Z) x Beckton Warrior R577 (1526W) x Larson Timberland 319-B (1228S) x 567G													
	PB 1B 99.8%		C.E.	15 *	B.W.	-3.3	W.W.	56	Y.W.	93	M.E.	-1	MILK	21	STAY	18
	CARCASS		Dam:	15		-2		59		98		4		17		22
	MA .36		Sire:	16		-4.6		53		87		-6		26		14
	RE -.12		BW History of Dam on 6 Calves: Range 68-92 Ave. 81#													
	BF .04		HB 194 GM 48 His pedigree keeps us from calling him a two or three star bull with Warrior and Timberland. R15w is out of his grand dam which shows more birthweight. Two maternal brothers have Rib Eyes of 14.34 and 12.37 both Choice marbling. His dam has a MPPA of 101. Top 7% for CED and 8% for Birthweight in the breed.													
R5w	BRILLIANCE3212	P	2/17/19	78	540	562	708	3.43	796	3.14	896	3.70	3.39	\$3,200		
	4149992		DKK Priority Rock 719 (1616X) x Beckton Hustler N859 (1085R) x Schuler Figuro 3573 (4971) x 3694													
	PB 1A 100%		C.E.	13 *	B.W.	-1	W.W.	57	Y.W.	95	M.E.	2	MILK	23	STAY	20
	CARCASS		Dam:	11		1		57		89		3		21		20
	MA .51		Sire:	16		-2.9		58		101		1		26		20
	RE -.03		BW History of Dam on 8 Calves: Range 60-84 Ave. 76#													
	BF .03		HB 197 GM 49 Weaning ratio of 102 and three maternal brothers have Rib Eyes of 12.43, 12.76 and 14.74, one Choice and two Choice plus. Top 10% in Stay, 13% Herd Builder and 17% Milk for the breed. Bred for thickness.													
R6w	CARDINAL E372	P	2/19/19	60	448	542	558	2.24	668	3.93	766	3.63	3.03	\$3,000		
	4150286		Beckton Scamp B504 (2427E) x BSF Nebula U049 (1852Z) x Larson Timberland 319-8 (1123R) x 478K													
	PB 1B 99.9%		C.E.	21 * * *	B.W.	-8.1	W.W.	46	Y.W.	72	M.E.	-3	MILK	23	STAY	16
	CARCASS		Dam:	16		-4.6		52		82		-3		24		18
	MA .35		Sire:	24		-9.2		41		64		-4		23		14
	RE .11		BW History of Dam on 1 Calf: BW 60# 1st Calf Heifer													
	BF .04		HB 194 GM 47 Three generations calving ease sires in his pedigree and he has constant EPD's. His dam has a MPPA of 100. The Cardinals are smaller framed and thick. He is in the top 1% of the breed for CED and Birthweight, 4% for CEM.													

Tag	Sire	Poll Horn	Birth Date	Birth Wt.	9-3 Wt.	205 Adj. Wt.	10-23 Wt.	49 Day ADG	11-20 Wt.	28 Day ADG	12-17 Wt.	27 Day ADG	105 Day ADG	Price	
R7w	BIG JON 3029	P	2/19/19	93	516	543	696	3.67	804	3.86	914	4.07	3.79	\$3,200	
	4150168		Larson Totem 150 (2109B) x BSF Epic T586 (1765Y) x Larson Timberland 319-8 (1214S) x 555L												
	PB 1B 99.9%		C.E. 8 *	B.W.	1.2	W.W.	67	Y.W.	116	M.E.	2	MILK	24	STAY	15
	CARCASS		Dam: 10		1.5		67		121		4		26	13	
	MA .31		Sire: 6		1		67		110		-1		21	18	
	RE .30		BW History of Dam on 3 Calves: Range 72-93 Ave. 83#												
	BF .02		HB 165 GM 50 Looking for high weaning and yearling weight calves this is a bull to look at. A maternal brother has a Rib Eye of 11.38, Choice minus marbling. Top 1% for ADG, 3% for Carcass Wt., 5% Yearling Wt. and 13% Rib Eye for the breed.												
R8w	SOVERIGN 5282	P	2/19/19	65	493	586	672	3.65	772	3.57	880	4.0	3.69	\$3,200	
	4150272		CRS Diamnd Brilliance 3212 (2394E) x Beckton Warrior R577 (1385U) x Shoc Kayak C80 (623L) x 1771												
	PB 1A 100%		C.E. 17 *	B.W.	-2.5	W.W.	52	Y.W.	87	M.E.	0	MILK	26	STAY	19
	CARCASS		Dam: 15		-1.7		52		93		2		26	20	
	MA .38		Sire: 19		-3.2		52		80		-2		26	17	
	RE -.11		BW History of Dam on 1 Calf: BW 65# 1st Calf Heifer												
	BF .03		HB 202 GM 48 Not a calving ease pedigree even though he is a 65# Sovereign. Has a weaning ratio of 107 and his dam has a MPPA of 103. Top 1% for CED, 5% Birthweight and CEM, 6% Milk for the breed.												
R9w	NEBULA U049	P	2/19/19	74	454	478	628	3.55	692	2.29	782	3.33	3.12	\$3,000	
	4150172		BSR Hilltop T096 (2061B) BSF Nebula U553 (1761Y) x BUF CRK CHF (2006)												
	PB 1B 99.6%		C.E. 20 ***	B.W.	-8.1	W.W.	34	Y.W.	52	M.E.	1	MILK	19	STAY	19
	CARCASS		Dam: 21		-10		19		24		-2		20	17	
	MA .36		Sire: 19		-6.3		49		80		3		18	21	
	RE -.22		BW History of Dam on 4 Calves: Range 56-74 Ave. 65#												
	BF .03		HB 202 GM 46 Smaller framed cow family that raise calving ease bulls. Two maternal brothers have Rib Eyes of 11.77 and 11.35, Choice marbling. Top 1% for CED and Birthweight, 10% for Herd Builder and Stay for the breed.												
R10w	CLIFFTOP C186	P	2/21/19	83	506	569	634	2.61	722	3.14	784	2.3	2.65	\$3,200	
	4150220		BSF Nebula U049 (2222D) x Buf Crk Cherokee L129 (1109R) x Glacier Logan 210 (732M) x 235F												
	PB 1B 99.8%		C.E. 15 ***	B.W.	-4.2	W.W.	52	Y.W.	80	M.E.	-2	MILK	25	STAY	17
	CARCASS		Dam: 15		-3.8		50		73		3		25	19	
	MA .41		Sire: 16		-4.6		53		87		-6		26	14	
	RE -.13		BW History of Dam on 2 Calves: Range 73-83 Ave 78#												
	BF .04		HB 177 GM 48 More performance in a calving ease bull. He has a weaning ratio of 104 and his dam has a MPPA of 103. Top 14% of the breed for Birthweight. Bred alike EPD's.												
R11w	BIG JON 3029	P	2/22/19	98	552	593	706	3.14	788	2.93	890	3.78	3.22	\$3,200	
	4149982		TR Jubilation ST652 (1481W) x LSFR Hill Country 2LW (1057R) x Holden Elway R510 (R986) x R638												
	PB 1A 100%		C.E. 9 *	B.W.	0.6	W.W.	65	Y.W.	102	M.E.	0	MILK	23	STAY	19
	CARCASS		Dam: 12		0.2		62		93		1		25	19	
	MA .32		Sire: 6		1		67		110		-1		21	18	
	RE .26		BW History of Dam on 8 Calves: Range 70-108 Ave. 88#												
	BF .01		HB 188 GM 49 Weaning ratio of 108 and his dam has a MPPA of 104. A full brother has a Rib Eye of 14.44, Choice marbling and a maternal brother has a Rib Eye of 15.12, Choice marbling. Top 9% for Weaning Wt., 11% Yearling Wt. and 12% Rib Eye. Family with a little more frame.												
R12w	CLIFFTOP C186	P	2/23/19	76	445	546	638	3.94	740	3.64	852	4.15	3.88	\$3,200	
	4150302		SR Duke B109 (2402E) x Larson Totem 150 (2085B) x Beckton Hustler N859 (1504W) x Firefly V83 (908P)												
	PB 1B 99.9%		C.E. 11 *	B.W.	-0.9	W.W.	64	Y.W.	107	M.E.	-2	MILK	27	STAY	16
	CARCASS		Dam: 7		2.8		74		127		3		27	18	
	MA .39		Sire: 16		-4.6		53		87		-6		26	14	
	RE -.03		BW History of Dam on 1 Calf: BW 76# 1st Calf Heifer												
	BF .04		HB 171 GM 49 One star because of his pedigree. His dam is out of a family with a pedigree of performance with Duke, Totem and Hustler. His dam has a MPPA of 100. Top 10% of the breed for ADG and Carcass Wt. Smaller framed, thick bull.												



Red Angus Sale Bulls



Tag	Sire	Poll	Birth	Birth	9-3	205	10-23	49	11-20	28	12-17	27	105	Price
		Horn	Date	Wt.	Wt.	Adj.	Wt.	Day	Wt.	Day	Wt.	Day	Day	
						Wt.		ADG		ADG		ADG	ADG	
	Calf Reg #		Dam											
	%Sim Red Ang		EPD's											
R13w	CLIFFTOP C186	P	2/23/19	84	552	588	742	3.88	816	2.64	904	3.26	3.35	\$3,200
	4150016		TR Julian TT780 (1621X) x LSFR Hill Country 2LW (907P) x Red Cedar TRRA 570 (378H) x 138E	Frame Score 6.48										
	PB 1B 99.9%		C.E. 16 ** B.W. -5.2 W.W. 47 Y.W. 69 M.E. -3 MILK 28 STAY 18											
	CARCASS		Dam: 17 -5.9 41 51 -1 31 21											
	MA .34		Sire: 16 -4.6 53 87 -6 26 14											
	RE -.16		BW History of Dam on 9 Calves: Range 58-84 Ave. 74# Cow Wt. 1370											
	BF .03		HB 184 GM 47 Weaning ratio of 107 and his dam has a MPPA of 103. Six maternal brothers have Rib Eyes of 16.08, 13.66, 16.01, 14.61, 14.32 and 13.55, Choice to Choice plus marbling. Bred in thickness with his pedigree. Top 5% of the breed for Birthweight and Milk, 13% for CED. Lots of consistency in his EPD's.											
R14w	CLIFFTOP C186	P	2/24/19	89	564	637	714	3.06	810	3.43	940	4.81	3.58	\$3,200
	4150238		BSF Heritage A533 (2230D) x Beckton Hasten W753 (1773Y) x CFLD Rebellas Robinhood 538 (R896) x 444	Frame Score 6.49										
	PB 1B 99.9%		C.E. 14 * B.W. -3.2 W.W. 56 Y.W. 88 M.E. -4 MILK 25 STAY 15											
	CARCASS		Dam: 12 -1.7 58 89 -2 24 16											
	MA .40		Sire: 16 -4.6 53 87 -6 26 14											
	RE -.15		BW History of Dam on 2 Calves: Range 89-98 Ave 94# Cow Wt. 1220											
	BF .05		HB 162 GM 48 Lots of performance eventhough he has more of a calving ease pedigree. He has a weaning ratio of 116 and ranked 7/85 and his dam has a MPPA of 110. A maternal brother had a Rib Eye of 13.82, Choice marbling. Bred alike EPD's for consistency in his calves. Family with naturall thickness.											
R15w	BIG JON 3029	P	2/25/19	100	439	536	610	3.49	714	3.71	800	3.19	3.44	\$3,200
	4149938		Larson Timberland 319-8 (1228S) x Red Cedar WVX 567 (567G) x Buf Crk Hobo 2839 (123D)	Frame Score 6.5										
	PB 1A 100%		C.E. 7 * B.W. 2.2 W.W. 58 Y.W. 93 M.E. 2 MILK 22 STAY 19											
	CARCASS		Dam: 8 3.5 50 76 5 22 21											
	MA .23		Sire: 6 1 67 110 -1 21 18											
	RE .19		BW History of Dam on 12 Calves: Range 78-120 Ave. 95# Cow Wt. 1580											
	BF .01		HB 186 GM 48 His dam has a MPPA of 102. Four maternal brothers have Rib Eyes of 14.47, 13.34, 13.32 and 15.23, one Choice minus and three Choice marbling. Top 7% of the breed for Stay.											
R16w	SOVERIGN 5282	P	2/25/19	57	469	581	624	3.16	694	2.5	796	3.78	3.11	\$3,200
	4150314		LSFR Final Statement 51Z (2453E) x MTN View Robinhood 987 (757M) x Holden Elway 510 (R940) x R504	Frame Score 5.02										
	PB 1A 100%		C.E. 16 * B.W. -3.3 W.W. 46 Y.W. 73 M.E. 2 MILK 24 STAY 18											
	CARCASS		Dam: 14 -3.4 40 67 6 22 19											
	MA .37		Sire: 19 -3.2 52 80 -2 26 17											
	RE -.12		BW History of Dam on 1 Calf: BW 57# 1st Calf Heifer Cow Wt. 996											
	BF .01		HB 194 GM 47 Not a two or three star bull because of his pedigree eventhough he has a actual birthweight of 57#. He has a weaning ratio of 106 and his dam has a MPPA of 102. Top 1% of the breed for CED and Birthweight, 3% for CEM, 9% Herd Builder and 12% for Milk.											
R19w	BRILLIANCE 3212	P	2/26/19	85	490	523	670	3.67	774	3.71	890	4.3	3.81	\$3,200
	4150052		TR Julian TT780 (1697Y) x LSFR Pure Country 16P (1342T) x Shoco Firefly V83 (596L) x 307G	Frame Score 5.53										
	PB 1A 100%		C.E. 13 * B.W. -1.3 W.W. 57 Y.W. 89 M.E. -1 MILK 23 STAY 21											
	CARCASS		Dam: 10 0.3 57 77 -2 20 23											
	MA .50		Sire: 16 -2.9 58 101 1 26 20											
	RE .07		BW History of Dam on 7 Calves: Range 85-96 Ave. 88# Cow Wt. 1365											
	BF .04		HB 211 GM 49 Natural thickness. Four maternal brothers have Rib Eyes of 11.69, 11.69, 14.74 and 14.55 all Choice marbling. Top 3% of the breed for Stay, 6% Herd Builder and 19% Milk.											
R20w	BRILLIANCE3212	P	2/26/19	81	516	550	718	4.12	836	4.21	936	3.70	4.0	\$3,200
	4150070		Beckton Warrior R577 (1792Z) x Shoco Firefly V83 (883N) x Glacier Logan 210 (R754) x 066C	Frame Score 5.25										
	PB 1B 99.9%		C.E. 12 * B.W. -0.5 W.W. 59 Y.W. 103 M.E. 2 MILK 21 STAY 19											
	CARCASS		Dam: 9 1.9 60 106 3 17 19											
	MA .44		Sire: 16 -2.9 58 101 1 26 20											
	RE .11		BW History of Dam on 6 Calves: Range 50-90 Ave 70# Cow Wt. 1740											
	BF .04		HB 198 GM 49 Weaning ratio of 100 and his dam has a MPPA of 104. This is her first bull calf so there is no Rib Eye information. More frame on the dams side. Top 7% of the breed for ADG, 11% Stay and 13% Herd Builder.											



Tag	Sire	Poll	Birth	Birth	9-3	205	10-23	49	11-20	28	12-17	27	105	Price
		Horn	Date	Wt.	Wt.	Adj.	Wt.	Day	Wt.	Day	Wt.	Day	Day	
						Wt.		ADG		ADG		ADG	ADG	
	Calf Reg #		Dam											
	%Sim Red Ang		EPD's											
R21w	IMPRESSION	P	2/28/19	90	532	578	704	3.51	796	3.29	894	3.63	3.45	\$3,200
	4150170		Beckton Accent W226 (2014B) x Beckton Hasten W753 (1705Y) x Lsfr Pure Country 16P (1572W) x 860N	Frame Score 6.04										
	PB 1A 100%		C.E. 16 * B.W. -3 W.W. 57 Y.W. 87 M.E. -1 MILK 22 STAY 19											
	CARCASS		Dam: 11 Sire: 20	1.5	62	96	-3	23	17					
	MA .48			-7.5	52	78	1	21	22					
	RE -.07		BW History of Dam on 3 Calves: Range 86-109 Ave. 95#											
	BF .04		HB 204 GM 48 Weaning ratio of 105 and his dam has a MPPA of 104. A maternal brother has a Rib Eye of 12.59 and Choice marbling. Top 6% for Herd Builder, 7% Stay for the breed. Bred alike weaning and yearling EPD's.											
R22w	IMPRESSION	P	3/2/19	76	574	667	748	3.55	846	3.5	934	3.26	3.43	\$3,200
	4150248		CRS Diamnd Brilliance 3212 (2277D) x Lsfr Jubilation 42W (1951A) x Beckton Hustler N859 (1504W)	Frame Score 6.07										
	PB 1A 100%		C.E. 18 * B.W. -5.4 W.W. 53 Y.W. 84 M.E. 2 MILK 26 STAY 21											
	CARCASS		Dam: 16 Sire: 20	-3.4	54	91	2	31	19					
	MA .47			-7.5	52	78	1	21	22					
	RE .02		BW History of Dam on 2 Calves: Range 71-76 Ave. 74#											
	BF .04		HB 217 GM 47 His figures look like a calving ease bull but we call him a one star for cows because of his pedigree. He has lots of performance. Weaning ratio of 121 and ranked 2/85 and his dam has a MPPA of 111. Top 3% of the breed for CED and Birthweight, 4% for Herd Builder, 8% Stay and 11% Milk.											
R23w	IMPRESSION	P	3/2/19	79	528	614	672	2.94	772	3.57	862	3.33	3.18	\$3,200
	4150254		BSF Heritage A533 (2334D) x Red SSS Oly 554T (2016B) x Lsfr Hill Country 2LW (1177S) x R926	Frame Score 6.32										
	PB 1B 99.9%		C.E. 18 ** B.W. -6.2 W.W. 54 Y.W. 85 M.E. -1 MILK 23 STAY 19											
	CARCASS		Dam: 16 Sire: 20	-4.8	56	92	-3	25	15					
	MA .51			-7.5	52	78	1	21	22					
	RE .05		BW History of Dam on 2 Calves: Range 73-79 Ave. 76#											
	BF .04		HB 203 GM 48 Same cow family as our top weaning weight bull, R27W, and this bull has a weaning ratio of 112 and ranked 15/85. His dam has a MPPA of 107. His grand dam, 2016B, is the dam of R27W. Identical pedigrees with Heritage as the difference. Top 3% of the breed for Birthweight, 5% CED and 9% Herd Builder											
R25w	EPIC D636	P	3/3/19	83	460	507	650	3.88	766	4.14	870	3.85	3.90	\$3,200
	4150124		Beckton Accent W226 (2047B) x Glacier Chateau 744 (1142S) x Glacier Logan 210 (736M) x 1051	Frame Score 6.08										
	PB 1A 100%		C.E. 11 * B.W. -0.5 W.W. 59 Y.W. 101 M.E. -1 MILK 22 STAY 17											
	CARCASS		Dam: 14 Sire: 8	-2.8	46	79	1	28	18					
	MA .46			1.8	71	123	-3	17	15					
	RE .02		BW History of Dam on 3 Calves: Range 70-83 Ave 77#											
	BF .04		HB 175 GM 50 Bred in thickness with this bulls pedigree. A maternal brother has a Rib Eye of 11.97, Choice marbling.											
R27w	IMPRESSION	P	3/3/19	80	626	692	806	3.67	916	3.93	950	1.63	3.09	\$3,200
	4150132		Red SSS Oly 554T (2016B) x Lsfr Hill Country 2LW (1177s) x Holden Elway 510 (R926) x R534	Frame Score 6.8										
	PB 1A 100%		C.E. 17 * B.W. -5.5 W.W. 55 Y.W. 88 M.E. 0 MILK 27 STAY 20											
	CARCASS		Dam: 14 Sire: 20	-3.5	59	98	-1	33	18					
	MA .50			-7.5	52	78	1	21	22					
	RE .08		BW History of Dam on 4 Calves: Range 68-80 Ave. 76#											
	BF .04		HB 212 GM 48 He has a weaning ratio of 126 and ranked 1/85. R23W has the same pedigree with the addition of his dam out of Heritage. R27W's dam has a MPPA of 113. Lighter birthweight for all of his performance. Top 4% of the breed for Herd Builder and Birthweight, 7% CED, 10% Milk and Stay, 11% Weaning Wt. and 15% Yearling Wt.											
R28w	MERLIN 018A	P	3/4/19	98	534	598	702	3.43	780	2.79	850	2.59	3.01	\$3,200
	4149958		Beckton Hustler N859 (1367T) x Glacier Hi Country 926 (805N) x Buf Crk Proof 3161 (R516) x 3294	Frame Score 6.1										
	PB 1A 100%		C.E. 13 * B.W. -1.5 W.W. 67 Y.W. 104 M.E. 1 MILK 23 STAY 17											
	CARCASS		Dam: 11 Sire: 15	1	54	81	3	28	20					
	MA .42			-3.9	80	128	0	19	19					
	RE .25		BW History of Dam on 10 Calves: Range 68-108 Ave. 90#											
	BF .02		HB 208 GM 50 Only Merlin sired bull calf. He has a weaning ratio of 108 and his dam has a MPPA of 108. Four maternal brothers have Rib Eyes of 15.49, 13.77, 14.87 and 14.2 all Choice marbling. Top 13% of the breed for Weaning Wt. and Milk, 14% Rib Eye.											



Red Angus Sale Bulls



Tag	Sire	Poll	Birth	Birth	9-3	205	10-23	49	11-20	28	12-17	27	105	Price
		Horn	Date	Wt.	Wt.	Adj.	Wt.	Day	Wt.	Day	Wt.	Day	Day	
						Wt.		ADG		ADG		ADG	ADG	
R32w	HERITAGE A533	P	3/7/19	69	410	460	552	2.9	600	1.71	668	2.52	2.46	\$2,800
	4150144													
	PB 1B 99.9%													
	CARCASS													
	MA .46													
	RE .06													
	BF .03													
	Dam: Red SSS Oly 554T (2027B) x Beckton Hustler N859 (1417U) x Glacier Hi Country 926 (798N) x 598L EPD's: C.E. 17 * B.W. -5.6 W.W. 53 Y.W. 88 M.E. -4 MILK 19 STAY 14 Dam: 15 -4.7 56 97 -2 19 16 Sire: 18 -6.5 49 80 -6 18 13 BW History of Dam on 5 Calves: Range 58-72 Ave. 66# Cow Wt. 1400 HB 166 GM 49 Bred alike EPD's for consistency in his calves. A maternal brother had a Rib Eye of 11.17, Choice Plus marbling. Top 1% of the breed for Birthweight, 2% CED and 11% CEM.													
R33w	CARDINAL E372	P	3/7/19	70	512	643	680	3.43	734	1.93	842	4.0	3.14	\$3,200
	4150278													
	PB 1A 100%													
	CARCASS													
	MA .36													
	RE .11													
	BF .03													
	Dam: Straka's 9029 Herdsman 1049 (2346E) x TR Jubilation ST642 (1605X) x LSFR Hill Country 2LW (1120R) EPD's: C.E. 17 * B.W. -4 W.W. 58 Y.W. 93 M.E. -1 MILK 24 STAY 17 Dam: 10 1.1 75 122 3 25 20 Sire: 24 -9.2 41 64 -4 23 14 BW History of Dam on 1 Calf: BW 70# 1st Calf Heifer Cow Wt. 1265 HB 192 GM 49 Thick bull with performance. Weaning ratio of 117 and ranked 5/85 out of a first calf heifer. His dam has a MPPA of 107. He is in the top 2% of the breed for CED, 3% Birthweight and 10% CEM.													
R34w	CLIFFTOP C186	P	3/7/19	99	538	615	728	3.88	816	3.14	934	4.37	3.77	\$3,200
	4150184													
	PB 1B 98.3%													
	CARCASS													
	MA .41													
	RE -.15													
	BF .04													
	Dam: Straka's 9029 Herdsman 1049 (2185C) x MTN View Logan 827 (703M) x Buf Crk Hobo 2839 (164E) EPD's: C.E. 12 * B.W. -1.5 W.W. 58 Y.W. 96 M.E. -3 MILK 24 STAY 15 Dam: 8 1.6 63 105 1 21 16 Sire: 16 -4.6 53 87 -6 26 14 BW History of Dam on 2 Calves: Range 91-99 Ave. 95# Cow Wt. 1495 HB 157 GM 48 Weaning ratio of 112 and ranked 14/85. His dam has a MPPA of 105. Top 12% of the breed for Yearling Wt., 13% ADG, 14% Carcass Wt. and 15% Weaning Wt.													
R35w	BIG JON 3029	P	3/8/19	79	518	585	690	3.51	788	3.5	908	4.44	3.71	\$3,200
	4150154													
	PB 1B 99.8%													
	CARCASS													
	MA .40													
	RE .20													
	BF .01													
	Dam: Straka's 9029 Herdsman 1049 (2038B) x LSFR Pure Country 16P (1557W) x Shoc Kayak C80 (618L) x 74Y EPD's: C.E. 9 * B.W. -0.6 W.W. 61 Y.W. 99 M.E. 1 MILK 22 STAY 19 Dam: 13 -2.3 56 88 2 23 20 Sire: 6 1 67 110 -1 21 18 BW History of Dam on 4 Calves: Range 56-89 Ave 74# Cow Wt. 1390 HB 191 GM 49 Weaning ratio of 106. A full brother has a Rib Eye of 14.92, Choice marbling. Top 12% of the breed for Carcass Wt., 14% Stay and 17% Rib Eye. Real consistent in his gains.													
R36w	LOKI D710	P	3/9/19	84	423	471	622	4.06	712	3.21	786	2.74	3.46	\$3,000
	4150112													
	PB 1B 99.8%													
	CARCASS													
	MA .44													
	RE -.03													
	BF .04													
	Dam: BSF Nebula U049 (1957A) x Beckton Accent W226 (1708Y) x Beckton Hustler N859 (1317T) x 551L EPD's: C.E. 18 * * B.W. -4.9 W.W. 52 Y.W. 86 M.E. -2 MILK 23 STAY 19 Dam: 18 -4.4 57 95 2 23 22 Sire: 18 -5.5 48 76 -6 23 16 BW History of Dam on 5 Calves: Range 65-84 Ave.76# Cow Wt. 1545 HB 209 GM 48 Bred alike EPD's. Three maternal brothers have Rib Eyes of 11.95, 14.77 and 12.73 all Choice marbling. Top 2% of the breed for Birthweight, 3% CED, 7% Herd Builder, 8% Stay.													
R38w	SOVERIGN 5282	P	3/10/19	85	526	634	708	3.71	786	2.79	900	4.22	3.56	\$3,200
	4150260													
	PB 1B 99.9%													
	CARCASS													
	MA .37													
	RE -.12													
	BF .02													
	Dam: Beckton Scamp B504 (2285D) x BSF Nebula U049 (2064B) x LSFR Hill Country 2LW (1374U) x R708 EPD's: C.E. 19 * * B.W. -4.8 W.W. 51 Y.W. 78 M.E. -2 MILK 27 STAY 18 Dam: 18 -6.3 50 76 -2 27 18 Sire: 19 -3.2 52 80 -2 26 17 BW History of Dam on 2 Calves: Range 72-85 Ave. 79# Cow Wt. 972 HB 202 GM 48 Weaning ratio of 115 and ranked 9/85. Consistent EPD's and his dam has a MPPA of 106. A full brother has a Rib Eye of 12.17, Choice marbling. Top 3% of the breed for CED, 6% Herd Builder, 8% Birthweight 13% CEM, and 14% Milk. His dam weaned off 54% of her body weight with no creep feed just milk and grass.													



Tag	Sire	Poll	Birth	Birth	9-3	205	10-23	49	11-20	28	12-17	27	105	Price	
		Horn	Date	Wt.	Wt.	Adj.	Wt.	Day	Wt.	Day	Wt.	Day	Day		
						Wt.		ADG		ADG		ADG	ADG		
	Calf Reg #		Dam												
	%Sim Red Ang		EPD's												
R39w	LOKI D710	P	3/11/19	77	518	592	680	3.31	778	3.5	858	2.96	3.24	\$3,000	
	4150014		LSFR Hill 2LW 29U (1633X) x BFCK Cherokee CNYN 4912 (808N) x Glacier Hi Country 926 (551L) x R640												
	PB 1B 99.9%		C.E. 16 *	B.W.	-4.8	W.W.	50	Y.W.	75	M.E.	-2	MILK	29	STAY	19
	CARCASS		Dam: 15		-4		51		73		3		34	22	
	MA .44		Sire: 18		-5.5		48		76		-6		23	16	
	RE -.00		BW History of Dam on 7 Calves: Range 64-98 Ave. 79#												
	BF .03		HB 197 GM 47 One star because of his pedigree. He has a weaning ratio of 108 and his dam has a MPPA of 105. Five maternal brothers have Rib Eyes of 13.6, 12.61, 15.25, 13.56 and 13.93, all Choice to Choice plus marbling. Top 1% of the breed for Birthweight, 2% Milk, 4% CED, 11% Stay and 13% Herd Builder.												
R40w	IMPRESSION	P	3/12/19	87	506	593	690	3.76	760	2.5	840	2.96	3.18	\$3,200	
	4150204		Beckton Accent W226 (2142C) x TR Jubilation ST642 (1555W) x LSFR Hill Country 2LW (919P) x 472X												
	PB 1A 100%		C.E. 17 *	B.W.	-4.4	W.W.	58	Y.W.	92	M.E.	0	MILK	24	STAY	22
	CARCASS		Dam: 14		-1.3		65		106		-1		28	21	
	MA .47		Sire: 20		-7.5		52		78		1		21	22	
	RE .00		BW History of Dam on 4 Calves: Range 59-87 Ave. 71#												
	BF .04		HB 225 GM 48 Weaning ratio of 108 and his dam has a MPPA of 108. This dam has had one set of twins and his grand dam 1555w, has had two sets of twins. Top 2% of the breed for Herd Builder, 3% Stay, 12% CED and 14% Weaning Wt.												
R43w	LIBERTY D210	P	3/12/19	90	430	498	550	2.45	652	3.64	716	2.37	2.72	\$3,000	
	4149962		TR Julian PT427 (1300T) x Larson Timberland 319-8 (1048R) x MTN View Robinhood 987 (757M) x R940												
	PB 1A 100%		C.E. 15 *	B.W.	-3.1	W.W.	61	Y.W.	95	M.E.	-1	MILK	20	STAY	18
	CARCASS		Dam: 16		-4.2		52		76		3		18	20	
	MA .54		Sire: 15		-2		70		114		-4		22	16	
	RE -.09		BW History of Dam on 10 Calves: Range 62-91 Ave. 79#												
	BF .02		HB 206 GM 50 Four maternal brothers have Rib Eyes of 12.65, 13.03, 15.62 and 15.02, Choice and Choice plus marbling.												
R45w	LOKI D710	P	3/14/19	71	430	498	550	2.45	646	3.43	720	2.74	2.76	\$3,000	
	4150008		TR Julian PT427 (1595X) x Glacier Hi Country 926 (552L) x Little Hobo (R618) x 424												
	PB 1B 99.9%		C.E. 17 **	B.W.	-4.7	W.W.	45	Y.W.	64	M.E.	-3	MILK	22	STAY	18
	CARCASS		Dam: 15		-3.8		43		52		0		20	20	
	MA .46		Sire: 18		-5.5		48		76		-6		23	16	
	RE -.08		BW History of Dam on 8 Calves: Range 61-92 Ave. 73#												
	BF .03		HB 191 GM 47 Bred alike EPD's. Three maternal brothers have Rib Eyes of 12.28, 13.11 and 13.13 with Choice and Choice plus marbling. Top 1% of the breed for CED and Birthweight, 5% CEM.												
R46w	IMPRESSION	P	3/14/19	91	526	616	728	4.12	820	3.29	906	3.19	3.62	\$3,200	
	4149948		LSFR Pure Country 16P (1355T) x Badlands Mr. Beef 805 (595L) x LSFR Chief 515 B2W (244F) x 102D												
	PB 1A 100%		C.E. 12 *	B.W.	-1.4	W.W.	62	Y.W.	96	M.E.	3	MILK	23	STAY	22
	CARCASS		Dam: 5		4.7		73		114		5		24	22	
	MA .50		Sire: 20		-7.5		52		78		1		21	22	
	RE .04		BW History of Dam on 11 Calves: Range 76-128 Ave. 97#												
	BF .04		HB 217 GM 48 Weaning ratio of 112 and ranked 13/85. His dam has a MPPA of 109. Three maternal brothers have Rib Eyes of 15.14, 13.19 and 16.02, Choice and Choice plus marbling. Top 3% of the breed for Stay, 5% for Herd Builder and Weaning Wt. and 11% Yearling Wt.												
R47w	IMPRESSION	P	3/15/19	90	520	604	658	2.82	708	1.79	772	2.37	2.4	\$3,000	
	4150020		DKK Dandy Day 8017 (1579X) x Beckton Hustler N859 (1195S) x Shoco Firefly V83 (918P)												
	PB 1B 99.9%		C.E. 17 *	B.W.	-4.7	W.W.	52	Y.W.	86	M.E.	3	MILK	25	STAY	20
	CARCASS		Dam: 14		-1.9		52		94		5		30	18	
	MA .42		Sire: 20		-7.5		52		78		1		21	22	
	RE .08		BW History of Dam on 9 Calves: Range 62-92 Ave. 77#												
	BF .04		HB 209 GM 48 Weaning ratio of 110 and his dam has a MPPA of 102. For bred in consistency in his calves look at his bred alike EPD's. Four maternal brothers have Rib Eyes of 14.1, 14.9, 15.21 and 11.7 all Choice marbling. Top 12% of the breed for Herd Builder and 14% for Stay.												



Red Angus Sale Bulls



Tag	Sire	Poll	Birth	Birth	9-3	205	10-23	49	11-20	28	12-17	27	105	Price	
		Horn	Date	Wt.	Wt.	Adj	Wt.	Day	Wt.	Day	Wt.	Day	Day		
						Wt.		ADG		ADG		ADG	ADG		
R48w	IMPRESSSION	P	3/15/19	73	484	564	640	3.18	726	3.07	824	3.63	3.24	\$3,200	
	4150120		Beckton Accent W226 (2072B) x LSF Hill Country 2LW (1077R) x Glacier Logan 210 (419J) Frame Score 6.22												
	PB 1B 98.4%		C.E.	19 ***	B.W.	-6.3	W.W.	50	Y.W.	80	M.E.	0	MILK	25 STAY	21
	CARCASS		Dam:	18		-5.2		49		82		-1		29	20
	MA .43		Sire:	20		-7.5		52		78		1		21	22
	RE .00		BW History of Dam on 4 Calves: Range 47-76 Ave. 67# Cow Wt. 1400												
	BF .04		HB 222 GM 47 Weaning ratio of 103. A maternal brother has a Rib Eye of 14.89, Choice marbling. Top 1% of the breed for CED and Birthweight, 2% Herd Builder, 4% Stay and 9% CEM.												
R49w	BIG JON 3029	P	3/15/19	93	455	558	644	3.86	670	.93	758	3.26	2.89	\$2,800	
	4150218		Larson Totem 150 (2224D) x Larson Timberland 319-8 (1123R) x Shoco Firefly V83 (478K) x 278G Frame Score 5.73												
	PB 1A 100%		C.E.	6 *	B.W.	2.5	W.W.	69	Y.W.	117	M.E.	1	MILK	24 STAY	19
	CARCASS		Dam:	7		3.9		71		124		3		27	19
	MA .29		Sire:	6		1		67		110		-1		21	18
	RE .34		BW History of Dam on 2 Calves: Range 56-93 Ave. 75# Cow Wt. 1320												
	BF .02		HB 187 GM 50 Weaning ratio of 102. Top 1% of the breed for ADG, 3% Yearling Weight, 7% Carcass Wt., 8% Rib Eye and 9% Weaning Wt.												
R50w	CLIFFTOP C186	P	3/15/19	79	411	490	600	3.86	692	3.29	766	2.74	3.38	\$3,000	
	4150208		BSF Nebula U049 (2155C) x LSF Hill Country 2LW (1374U) x Holden Elway 510 (R708) x 1725 Frame Score 4.99												
	PB 1B 99.8%		C.E.	16 **	B.W.	-4.4	W.W.	53	Y.W.	86	M.E.	-1	MILK	28 STAY	18
	CARCASS		Dam:	16		-4.3		54		85		4		30	23
	MA .37		Sire:	16		-4.6		53		87		-6		26	14
	RE -.07		BW History of Dam on 3 Calves: Range 77-88 Ave. 81# Cow Wt. 1250												
	BF .04		HB 192 GM 48 Dam has a MPPA of 102. Two full brothers have Rib Eyes of 13.67 and 14.44, both Choice marbling top 4% of the breed for Milk and Birthweight, 9% CED and 14% Stay.												
R51w	BIG JON 3029	P	3/16/19	98	483	538	654	3.49	752	3.5	816	2.37	3.17	\$3,200	
	4150156		Beckton Hustler N859 (2057B) x LSF Pure Country 16P (1572W) x BFCK Cherokee CNYN 4912 (860N) Frame Score 6.48												
	PB 1B 99.9%		C.E.	9 *	B.W.	0.9	W.W.	67	Y.W.	110	M.E.	1	MILK	22 STAY	18
	CARCASS		Dam:	12		0.7		68		110		2		23	19
	MA .37		Sire:	6		1		67		110		-1		21	18
	RE .31		BW History of Dam on 4 Calves: Range 66-115 Ave. 88# Cow Wt. 1520												
	BF .01		HB 186 GM 50 Dam has a MPPA of 107. A maternal brother has a Rib Eye of 12.48, Choice plus marbling. Top 7% of the breed for ADG, 9% Yearling Wt., 14% Weaning Wt., 15% Carcass Wt. and 16% Rib Eye.												
R52w	IMPRESSSION	P	3/16/19	74	514	610	660	2.98	760	3.57	844	3.11	3.14	\$3,200	
	4149988		BSF Epic T586 (1545W) x LSF Pure Country 16P (1355T) x 595L Frame Score 5.25												
	PB 1B 99.9%		C.E.	15 *	B.W.	-3.5	W.W.	57	Y.W.	93	M.E.	2	MILK	23 STAY	20
	CARCASS		Dam:	9		0.6		62		107		3		26	18
	MA .49		Sire:	20		-7.5		52		78		1		21	22
	RE -.00		BW History of Dam on 9 Calves: Range 72-119 Ave. 86# Cow Wt. 1580												
	BF .05		HB 204 GM 48 Weaning ratio of 111, ranked 17/85 and his dam has a MPPA of 108. A full brother has a Rib Eye of 16.49, Choice minus marbling. A maternal brother has a Rib Eye of 12.37 with Choice plus marbling. He is in the top 9% of the breed for Birthweight, 11% Herd Builder, 13% for both CED and Stay.												
R53w	IMPRESSSION	P	3/17/19	55	433	504	542	2.22	636	3.36	738	3.78	2.90	\$3,000	
	4150138		Red SSS Oly 554T (2020B) x LSF Pure Country 16P (1464U) x CFLD Rebellas Robinhood 538 (682M) Frame Score 5.02												
	PB 1A 100%		C.E.	18 *	B.W.	-6.8	W.W.	51	Y.W.	81	M.E.	0	MILK	25 STAY	20
	CARCASS		Dam:	16		-6.2		51		84		0		30	18
	MA .52		Sire:	20		-7.5		52		78		1		21	22
	RE .06		BW History of Dam on 4 Calves: Range 52-82 Ave 64# Cow Wt. 1295												
	BF .04		HB 214 GM 48 Because of his pedigree we gave him a one star for the use on cows. His birthweight himself is light because he is a twin. His EPD's show calving ease throughout but because of his pedigree we can't two or three star him His dam has a MPPA of 101. A full brother has a Rib Eye of 17.15, Choice marbling. A maternal brother has a Rib Eye of 13.15, Choice marbling. In the top 1% of the breed for Birthweight, 3% Herd Builder, 4% CED and Stay and 12% for CEM.												
	TWIN														

Tag	Sire	Poll Horn	Birth Date	Birth Wt.	9-3 Wt.	205 Adj. Wt.	10-23 Wt.	49 Day ADG	11-20 Wt.	28 Day ADG	12-17 Wt.	27 Day ADG	105 Day ADG	Price
R54w	BIG JON 3029 4149946	P	3/17/19	96	554	657	722	3.43	816	3.36	912	3.56	3.41	\$3,200
	Beckton Hustler N859 (1322T) x Holden Elway 510 (R984) x Blue Ridge EBV 213 (R418) Frame Score 6.7													
	PB 1A 100%		C.E. 12 *	B.W.	-1.8	W.W.	59	Y.W.	100	M.E.	0	MILK	24	STAY 19
	CARCASS		Dam: 19		-4.6		51		90		1		27	20
	MA .33		Sire: 6			1	67		110		-1		21	18
	RE .28		BW History of Dam on 9 Calves: Range 50-96 Ave. 81# Cow Wt. 1480											
	BF .01		HB 200 GM 49 Performance, eye appeal and thickness. He has a weaning ratio of 120 and ranked 4/85. Five maternal brothers have Rib Eyes of 17.46, 14.26, 13.36, 13.66 and 14.45, Choice and Choice plus marbling. He is in the top 4% of the breed for ADG, 7% Yearling Wt. and Rib Eye, 12% Weaning Wt. and 13% for Herd Builder and Grid Master. This has been a very consistent female for Rick. Related to R57W.											
R55w	IMPRESSION 4150058	P	3/17/19	83	546	635	720	3.55	778	2.07	852	2.74	2.91	\$3,000
	Beckton Accent W226 (1849Z) x LSF Hill Country 2LW (1096R) x Shoco Firefly V83 (687M) x R722 Frame Score 5.51													
	PB 1A 100%		C.E. 18 **	B.W.	-5.3	W.W.	51	Y.W.	81	M.E.	1	MILK	28	STAY 22
	CARCASS		Dam: 16		-3.1		50		84		0		34	23
	MA .47		Sire: 20		-7.5		52		78		1		21	22
	RE .05		BW History of Dam on 6 Calves: Range 62-86 Ave. 74# Cow Wt. 1390											
	BF .04		HB 231 GM 47 Weaning ratio of 116 and ranked 8/85 and his dam has a MPPA of 104. Two maternal brothers have Rib Eyes of 13.19 and 12.86, both Choice plus marbling. He is in the top 2% of the breed for Herd Builder, 3% Stay, 5% CED, 6% Birthweight and 13% Milk.											
R56w	IMPRESSION 4149972	P	3/17/19	102	528	624	682	3.14	776	3.36	904	4.74	3.58	\$3,200
	LSFR Pure Country 16P (1563W) x Red Cedar WVX 567 (382H) x 212F Frame Score 5.51													
	PB 1A 100%		C.E. 14 *	B.W.	-2.7	W.W.	56	Y.W.	85	M.E.	2	MILK	23	STAY 22
	CARCASS		Dam: 8		2.1		61		92		3		26	21
	MA .60		Sire: 20		-7.5		52		78		1		21	22
	RE -.06		BW History of Dam on 9 Calves: Range 72-102 Ave. 91# Cow Wt. 1400											
	BF .04		HB 217 GM 48 This is a bull with bred in marbling. Three maternal brothers have Rib Eyes of 13.94, 12.86 and 15.24 all Choice plus marbling. He has a 114 weaning ratio and ranked 11/85 and his dam has a MPPA of 108. Top 5% of the breed for Stay 8% Herd Builder and 9% for Weaning Wt.											
R57w	CLIFFTOP C186 4150134	P	3/18/19	88	499	587	654	3.16	780	4.5	870	3.33	3.53	\$3,200
	BSF Nebula U049 (2022B) x Beckton Hustler N859 (1322T) x R984 Frame Score 6.01													
	PB 1B 99.8%		C.E. 17 **	B.W.	-5.1	W.W.	52	Y.W.	86	M.E.	-2	MILK	25	STAY 18
	CARCASS		Dam: 19		-5.6		50		85		2		24	21
	MA .38		Sire: 16		-4.6		53		87		-6		26	14
	RE -.12		BW History of Dam on 4 Calves: Range 63-88 Ave 76# Cow Wt. 1515											
	BF .04		HB 192 GM 48 Same cow family as R54W. Bred alike EPD's which gives more consistency in his calves. He has a weaning ratio of 107 and his dam has a MPPA of 101. A full brother has a Rib Eye of 13.62, Choice marbling. The 1322T cow line has some darker red calves that almost look black at times.											
R58w	BIG JON 3029 4150234	P	3/18/19	92	477	594	654	3.61	776	4.36	894	4.37	3.97	\$3,200
	CRS Diamnd Brilliance 3212 (2261D) x DKK Dandy Day 8017 (1604X) x LCC Major League A502M (1155S) Frame Score 5.77													
	PB 1B 99.9%		C.E. 12 *	B.W.	-2.3	W.W.	59	Y.W.	98	M.E.	2	MILK	26	STAY 19
	CARCASS		Dam: 17		-5.6		52		87		5		32	19
	MA .40		Sire: 6			1	67		110		-1		21	18
	RE .31		BW History of Dam on 2 Calves: Range 66-92 Ave. 79# Cow Wt. 1155											
	BF .02		HB 191 GM 49 Bred in thickness with his pedigree of Big Jon and Brilliance. He has a weaning ratio of 108 and his dam has a MPPA of 103. He is in the top 6% of the breed for Milk, 8% for Carcass Wt. and Rib Eye and 11% for ADG and Stay.											
R60w	CLIFFTOP C186 4149970	P	3/19/19	73	481	579	614	2.71	682	2.43	774	3.41	2.79	\$3,200
	LSFR Hill Country 2LW (1374U) x Holden Elway 510 (R708) x 1725 Frame Score 5.53													
	PB 1B 99.9%		C.E. 16 **	B.W.	-4.5	W.W.	49	Y.W.	76	M.E.	-1	MILK	33	STAY 19
	CARCASS		Dam: 17		-4.4		44		65		4		39	24
	MA .32		Sire: 16		-4.6		53		87		-6		26	14
	RE -.08		BW History of Dam on 10 Calves: Range 66-88 Ave. 78# Cow Wt. 1325											
	BF .03		HB 194 GM 47 Moderate sized cow family. He has a weaning ratio of 105 and his dam has a MPPA of 109. A full brother has a Rib Eye of 14.47, Choice marbling and three maternal brothers have Rib Eyes of 15.9, 14.92 and 16.16, 1 Choice and 2 Choice plus marbling. He is in the top 1% of the breed for Milk, 2% Birthweight, 4% CED, 10% Stay and 14% Herd Builder. This is a bull to keep females out of because you will notice his pedigree in a number of bulls on the sale and their dams are exceptional.											



Red Angus Sale Bulls



Tag	Sire	Poll	Birth	Birth	9-3	205	10-23	49	11-20	28	12-17	27	105	Price	
		Horn	Date	Wt.	Wt.	Adj.	Wt.	Day	Wt.	Day	Wt.	Day	Day		
						Wt.		ADG		ADG		ADG	ADG		
	Calf Reg#		Dam												
	%Sim Red Ang		EPD'S												
R61w	LOKI D710	P	3/19/19	85	436	508	598	3.31	674	2.71	754	2.96	3.03	\$3,000	
	4150100		LSFR Jubilation 42W (1997A) x LSFR Pure Country 16P (1419U) x LCC Major League A502M (1169S) Frame Score 6.03												
	PB 1B 99.9%		C.E. 15 *	B.W.	-3.2	W.W.	51	Y.W.	75	M.E.	-1	MILK	26	STAY	18
	CARCASS		Dam: 12		-0.8		54		73		3		29	20	
	MA .44		Sire: 18		-5.5		48		76		-6		23	16	
	RE -.14		BW History of Dam on 5 Calves: Range 72-94 Ave. 82# Cow Wt. 1680												
	BF .03		HB 191 GM 47 His dam has a MPPA of 102 and a maternal brother has a Rib Eye of 12.43, Choice minus marbling. He is in the top 10% of the breed for Milk, 11% Birthweight and 12% CED.												
R62w	LOKI D710	P	3/19/19	76	488	579	714	4.61	816	3.64	906	3.33	3.98	\$3,200	
	4150180		Straka's 9029 Herdsman 1049 (2040B) x MTN View Logan 827 (703M) x BUF CRK Hobo 2839 (164E) Frame Score 6.27												
	PB 1B 98.3%		C.E. 14 *	B.W.	-2.3	W.W.	58	Y.W.	95	M.E.	-2	MILK	24	STAY	17
	CARCASS		Dam: 9		0.9		68		113		1		24	18	
	MA .51		Sire: 18		-5.5		48		76		-6		23	16	
	RE -.00		BW History of Dam on 4 Calves: Range 69-91 Ave. 78# Cow Wt. 1565												
	BF .03		HB 182 GM 49 A one star pedigree on the dams side for calving ease. He has a weaning ratio of 105 and his dam has MPPA of 108. A maternal brother has a Rib Eye of 13.87, Choice plus marbling. He is in the top 10% of the breed for CED, and 7% Birthweight.												
R64w	BIG JON 3029	P	3/21/19	98	516	609	668	3.10	744	2.71	834	3.33	3.03	\$3,200	
	4150048		LSFR Jubilation 42W (1746Y) x Glacier Hi Country 926 (551L) x Blue Ridge Power Pac (R640) x 1805 Frame Score 6.05												
	PB 1A 100%		C.E. 9 *	B.W.	0.2	W.W.	63	Y.W.	100	M.E.	2	MILK	24	STAY	20
	CARCASS		Dam: 12		-1.5		59		91		4		28	22	
	MA .27		Sire: 6		1		67		110		-1		21	18	
	RE .15		BW History of Dam on 7 Calves: Range 60-100 Ave. 85# Cow Wt. 1545												
	BF .01		HB 193 GM 48 Weaning ratio of 111 and ranked 18/85. His dam has a MPPA of 110 on 7 calves. A full brother has a Rib Eye of 12.74, Choice marbling and two maternal brothers have Rib Eyes of 13.77 and 13.4, Choice marbling. Top 8% of the breed for Stay, 15% for Weaning and Yearling Wt. and 17% ADG.												
R65w	CLIFFTIOP C186	P	3/21/19	83	465	549	632	3.41	722	3.21	810	3.26	3.29	\$3,200	
	4150088		Larson Totem 150 (1895A) x Glacier Chateau 744 (1259T) x Beckton Hustler N859 (1085R) x 4971 Frame Score 6.05												
	PB 1B 99.9%		C.E. 13 *	B.W.	-2.2	W.W.	60	Y.W.	104	M.E.	0	MILK	29	STAY	17
	CARCASS		Dam: 11		0.1		66		121		6		32	20	
	MA .36		Sire: 16		-4.6		53		87		-6		26	14	
	RE -.03		BW History of Dam on 4 Calves: Range 70-97 Ave. 81# Cow Wt. 1740												
	BF .04		HB 184 GM 49 Looking to save some heifers this bull could work. He is in the top 4% of the breed for Milk, 7% for ADG, and 10% for Carcass Wt. His dam has a MPPA of 103 and a maternal brother has a Rib Eye of 13.12 Choice marbling.												
R66w	EPIC D636	P	3/22/19	88	407	484	600	3.94	674	2.64	762	3.26	3.38	\$3,200	
	4150128		LJC Mission Statement P27 (2033B) x LSFR Pure Country 16P (1196S) x CFLD Rebellas Robinhood (557L) Frame Score 6.06												
	PB 1A 100%		C.E. 9 *	B.W.	1.3	W.W.	73	Y.W.	123	M.E.	1	MILK	18	STAY	17
	CARCASS		Dam: 10		0.8		74		123		6		18	20	
	MA .51		Sire: 8		1.8		71		123		-3		17	15	
	RE .28		BW History of Dam on 3 Calves: Range 78-88 Ave. 81# Cow Wt. 1610												
	BF .04		HB 187 GM 52 Bred alike EPD's. He is in the top 4% of the breed for ADG and 15% for Yearling Wt												
R68w	BIG JON 3029	P	3/23/19	105	489	578	648	3.24	752	3.71	804	1.93	3.0	\$3,200	
	4150108		Larson Totem 150 (1925A) x BSF Epic T586 (1545W) x LSFR Pure Country 16P (1355T) x 595L Frame Score 6.53												
	PB 1B 99.9%		C.E. 8 *	B.W.	0.3	W.W.	66	Y.W.	113	M.E.	2	MILK	26	STAY	18
	CARCASS		Dam: 10		-0.3		65		117		4		31	19	
	MA .36		Sire: 6		1		67		110		-1		21	18	
	RE .31		BW History of Dam on 4 Calves: Range 72-105 Ave. 85# Cow Wt. 1385												
	BF .02		HB 185 GM 50 Same cow family as R52W. Bred alike EPD's and he has a weaning ratio of 105 and his dam has a MPPA of 103. A maternal brother has a Rib Eye of 13.56, Choice marbling. He is in the top 1% of the breed for ADG, 2% for Carcass Wt., 3% Yearling Wt., 8% Rib Eye and Birthweight, 11% Stay, 13% for Grid Master and 14% Milk.												



Red Angus Sale Bulls

Tag	Sire	Poll Horn	Birth Date	Birth Wt.	9-3 Wt.	205 Adj. Wt.	10-23 Wt.	49 Day ADG	11-20 Wt.	28 Day ADG	12-17 Wt.	27 Day ADG	105 Day ADG	Price
R69w	CLIFFTOP C186 4150030	P	3/23/19	103	495	588	618	2.51	732	4.07	838	3.93	3.27	\$3,200
	TR Julian PT427 (1713Y) x LSFR Hill Country 2LW (1301T) x CFLD Rebellas Robinhood 538 (835N) x R900 Frame Score 6.7													
	PB 1B 99.9%		C.E. 15 *	B.W.	-3.3	W.W.	53	Y.W.	79	M.E.	-2	MILK	26	STAY 18
	CARCASS	Dam:	13				52		71		3		26	21
	MA .40	Sire:	16		-4.6		53		87		-6		26	14
	RE -.08	BW History of Dam on 7 Calves: Range 64-103 Ave. 85#												
	BF .04	HB 185 GM 48 He has a weaning ratio of 107 and his dam has a MPPA of 105. A full brother has a Rib Eye of 14.26 and Choice plus marbling. Two maternal brothers have Rib Eyes of 14.89 and 14.1, Choice and Choice plus marbling.												
R70w	LOKI D710 4150000	P	3/23/19	104	506	607	660	3.14	758	3.5	870	4.15	3.47	\$3,200
	TR Julian PT427 (1589X) x Beckton Hustler N859 (1424U) x Glacier Supreme 682 (617L) Frame Score 6.5													
	PB 1B 99.9%		C.E. 14 *	B.W.	-2.5	W.W.	52	Y.W.	80	M.E.	-3	MILK	20	STAY 18
	CARCASS	Dam:	10		0.5		56		84		1		16	19
	MA .44	Sire:	18		-5.5		48		76		-6		23	16
	RE -.14	BW History of Dam on 8 Calves: Range 66-106 Ave. 88#												
	BF .04	HB 185 GM 48 Weaning ratio of 110 and ranked 19/85. A long bodied bull with style and performance. A full brother has a Rib Eye of 13.54, Choice plus marbling and a maternal brother has a Rib Eye of 12.47, Choice marbling.												
R73w	EPIC D636 4150244	P	3/24/19	73	398	513	612	4.37	688	2.71	794	3.93	3.77	\$3,000
	CRS Diamnd Brilliance 3212 (2220D) x BSF Nebula U049 (1921A) x LSFR Hill Country 2LW (1384U) Frame Score 5.9													
	PB 1B 99.9%		C.E. 14 *	B.W.	-2.7	W.W.	60	Y.W.	101	M.E.	0	MILK	21	STAY 18
	CARCASS	Dam:	20		-7.2		48		79		2		25	21
	MA .49	Sire:	8		1.8		71		123		-3		17	15
	RE .12	BW History of Dam on 2 Calves: Range 50-73 Ave. 62#												
	BF .05	HB 194 GM 50 Has so much dark hair he almost looks black. He comes out of a cow line of darker females. He is in the top 2% of the breed for Birthweight, 5% CED and 15% Herd Builder. There are a number of calves out of this cow family.												
R75w	BIG JON 3029 4150082	P	3/27/19	99	544	662	678	2.73	780	3.64	870	3.33	3.10	\$3,200
	Larson Totem 150 (1976A) x Larson Timberland 319-8 (1228S) x Red Cedar WVX 567 (567G) x 123D Frame Score 6.8													
	PB 1A 100%		C.E. 8 *	B.W.	1.4	W.W.	65	Y.W.	109	M.E.	2	MILK	26	STAY 19
	CARCASS	Dam:	10		1.8		63		109		5		30	20
	MA .28	Sire:	6		1		67		110		-1		21	18
	RE .32	BW History of Dam on 7 Calves: Range 58-99 Ave. 79#												
	BF .01	HB 193 GM 49 Performance pedigree out of high performance sires. Bred alike EPD's. Weaning ratio of 120 and ranked 3/85. His dam has a MPPA of 112. Top 2% of the breed for ADG, 3% Yearling Wt., 5% Weaning Wt. and Carcass Wt. 6% Stay and Rib Eye, and 10% for Herd Builder.												
R77w	SOVERIGN 5282 4150262	P	3/27/19	76	375	494	510	2.76	604	3.36	694	3.33	3.04	\$3,000
	BSF Nebula U553 (2320D) x BSF Nebula U049 (2013B) x TR Julian TT780 (1608X) x 686M Frame Score 4.9													
	PB 1B 99.8%		C.E. 18 * * *	B.W.	-4.1	W.W.	48	Y.W.	70	M.E.	-1	MILK	23	STAY 18
	CARCASS	Dam:	17		-4.9		44		60		-1		19	18
	MA .37	Sire:	19		-3.2		52		80		-2		26	17
	RE -.26	BW History of Dam on 2 Calves: Range 61-76 Ave. 69#												
	BF .02	HB 198 GM 47 True three star calving ease bull that should be able to be used for years because of his moderate size. Top 1% of the breed for CED, 4% Birthweight, and 9% for Herd Builder and CEM.												
R79w	EPIC D636 4150086	P	3/28/19	91	448	544	540	1.88	634	3.36	726	3.41	2.65	\$3,000
	DKK Dandy Day 8017 (1886A) x Beckton Hustler N859 (1319T) x Glacier Hi Country 926 (825N) x R502 Frame Score 5.65													
	PB 1A 100%		C.E. 9 *	B.W.	0.8	W.W.	61	Y.W.	104	M.E.	1	MILK	24	STAY 17
	CARCASS	Dam:	11		-0.3		50		85		5		31	19
	MA .45	Sire:	8		1.8		71		123		-3		17	15
	RE .12	BW History of Dam on 7 Calves: Range 62-91 Ave. 72#												
	BF .04	HB 173 GM 50 Four maternal brothers have Rib Eyes of 12.64, 15.4, 12.68 and 13.66, Choice and Choice plus marbling. His dam has had two sets of twins. He is in the top 14% of the breed for Milk, and 17% for ADG.												

Red Angus Sale Bulls



Tag	Sire	Poll	Birth	Birth	9-3	205	10-23	49	11-20	28	12-17	27	105	Price	
		Horn	Date	Wt.	Wt.	Adj.	Wt.	Day	Wt.	Day	Wt.	Day	Day		
						Wt.		ADG		ADG		ADG	ADG		
R81w	HERITAGE A533 4150060	P	4/1/19	95	421	517	606	3.78	700	3.36	808	4.0	3.69	\$3,200	
	LSFR Jubilation 42W (1820Z) x Shoco Firefly V83 (1349T) x Buf Crk Julian 4658 (532K) x 3533														
	Frame Score 6.19														
	PB 1B 99.9%		C.E. 16 *	B.W.	-3.5	W.W.	53	Y.W.	82	M.E.	-3	MILK	21	STAY	17
	CARCASS	Dam:	13		-0.4		56		85		0		24	21	
	MA .38	Sire:	18		-6.5		49		80		-6		18	13	
	RE -.11	BW History of Dam on 5 Calves: Range 78-96 Ave. 87#													
	BF .04	Cow Wt. 1480													
	HB 181 GM 47 Good gaining son of Heritage. Two maternal brothers have Rib Eyes of 13.32 and 11.95, Choice and Choice plus marbling.														
R83w	EPIC D636 4150240	P	4/1/19	102	456	603	656	4.08	704	1.71	828	4.59	3.54	\$3,200	
	CRS Diamnd Brilliance 3212 (2292D) x LSFR Jubilation 42W (1743Y) x MTN View Robinhood 987 (849N)														
	Frame Score 5.45														
	PB 1A 100%		C.E. 11 *	B.W.	-0.3	W.W.	64	Y.W.	108	M.E.	0	MILK	22	STAY	17
	CARCASS	Dam:	15		-2.4		58		92		3		27	20	
	MA .46	Sire:	8		1.8		71		123		-3		17	15	
	RE .11	BW History of Dam on 2 Calves: Range 62-102 Ave. 82#													
	BF .05	Cow Wt. 1235													
	HB 183 GM 50 Weaning ratio of 110 and ranked 22/85 and his dam has a MPPA of 104. He is in the top 7% of the breed for ADG and 14% for Yearling Wt.														
R84w	IMPRESSION 4150050	P	4/1/19	105	510	633	696	3.8	782	3.07	908	4.67	3.79	\$3,200	
	DDK Dandy Day 8017 (1752Y) x LSFR Hill Country 2LW (845N) x Shoco Firefly V83 (671Y) x R802														
	Frame Score 5.7														
	PB 1A 100%		C.E. 15 *	B.W.	-3.2	W.W.	52	Y.W.	85	M.E.	3	MILK	25	STAY	22
	CARCASS	Dam:	9		1.1		53		92		5		30	22	
	MA .44	Sire:	20		-7.5		52		78		1		21	22	
	RE .10	BW History of Dam on 6 Calves: Range 72-105 Ave. 87#													
	BF .03	Cow Wt. 1585													
	HB 219 GM 48 He has a weaning ratio of 115 and ranked 10/85 and his dam has a MPPA of 104. Two maternal brothers have Rib Eyes of 15.65 and 6.11 both Choice marbling. He is in the top 3% of the breed for Stay, 6% Herd Builder, and 15% for both Weaning and Yearling Wt.														
R85w	BIG JON 3029 4150092	P	4/2/19	102	492	613	667	3.57	746	2.82	838	3.41	3.3	\$3,200	
	LSFR Jubilation 42W (1958A) x Beckton Warrior R577 (1385U) x Shoc Kayak C80 (623L) x 1771														
	Frame Score 5.96														
	PB 1A 100%		C.E. 10 *	B.W.	0.4	W.W.	62	Y.W.	98	M.E.	1	MILK	23	STAY	20
	CARCASS	Dam:	14		-0.2		58		86		3		25	22	
	MA .28	Sire:	6		1		67		110		-1		21	18	
	RE .15	BW History of Dam on 5 Calves: Range 77-102 Ave. 89#													
	BF .01	Cow Wt. 1445													
	HB 199 GM 48 Performance pedigree going back to the dam of the first Red Angus bull we had, Copper, whose dam is 1771. He has a weaning ratio of 112 and ranked 16/85 and his dam has a MPPA of 106. A full brother has a Rib Eye of 11.72, Choice marbling and two maternal brothers have Rib Eyes of 16.22 and 13.18, Choice marbling. Top 7% of the breed for Stay, 10% Birthweight and 13% Yearling Wt.														
R87w	IMPRESSION 4150160	P	4/5/19	101	432	547	564	2.69	682	4.21	750	2.52	3.03	\$3,200	
	Larson Totem 150 (2006B) x DKK Priority Rock (1616X) x Beckton Hustler N859 (1085R) x 4971														
	Frame Score 5.99														
	PB 1A 100%		C.E. 15 *	B.W.	-3.2	W.W.	60	Y.W.	98	M.E.	2	MILK	26	STAY	20
	CARCASS	Dam:	10		1.1		68		118		4		31	19	
	MA .47	Sire:	20		-7.5		52		78		1		21	22	
	RE .06	BW History of Dam on 4 Calves: Range 71-101 Ave. 85#													
	BF .04	Cow Wt. 1300													
	HB 213 GM 48 This bull and R95W are out of twin sisters. If you need two bulls to run together these would be two to look at. He has a weaning ratio of 100 and his dam has a MPPA of 107. This is her first bull calf. Top 7% of the breed for Stay, 9% Herd Builder, 12% ADG, 13% Yearling Wt. and 16% Weaning Wt.														
R90w	LOKI D710 4150130	P	4/9/19	74	415	546	556	2.88	634	2.79	724	3.33	2.94	\$3,000	
	Beckton Accent W226 (2070B) x Larson Timberland 319-18 (1247S) x MT View Amie 319 (R510) x 3223														
	Frame Score 5.8														
	PB 1B 99.9%		C.E. 16 *	B.W.	-3.7	W.W.	50	Y.W.	83	M.E.	-3	MILK	27	STAY	19
	CARCASS	Dam:	14		-1.9		52		90		0		31	21	
	MA .44	Sire:	18		-5.5		48		76		-6		23	16	
	RE -.06	BW History of Dam on 6 Calves: Range 46-74 Ave. 59#													
	BF .04	Cow Wt. 1405													
	HB 194 GM 48 The average birthweight of this dam is only 59# because she has had two sets of twins. He is a one star for cows only because his pedigree has Timberland in it and the dam, 2070B, has a birthweight EPD of only -1.9 which isn't low enough for a heifer bull. A maternal brother has a Rib Eye of 15.05 and Choice plus marbling. Top 2% of the breed for Birthweight, 3% CED, 5% Milk, 9% Herd Builder and 10% Stay.														



Tag	Sire	Poll Horn	Birth Date	Birth Wt.	9-3 Wt.	205 Adj. Wt.	10-23 Wt.	49 Day ADG	11-20 Wt.	28 Day ADG	12-17 Wt.	27 Day ADG	105 Day ADG	Price
Calf Reg #		Dam												
%Sim Red Ang		EPD's												
R91w	EPIC D636 4149934	P	4/9/19	77	435	581	564	2.63	652	3.14	726	2.74	2.77	\$3,000
	LSFR Hill Country 2LW (1188S) x LSFR Elite 8FW (472K) x Red Cedar 567 (382H) Frame Score 4.82													
	PB 1A 100%		C.E. 10 *	B.W. 0.5	W.W. 0.5	Y.W. 57	M.E. 94				1 MILK	27 STAY	20	
	CARCASS		Dam: 12		-0.7	43	64				5	36	24	
	MA .38		Sire: 8		1.8	71	123				-3	17	15	
	RE -.05	BW History of Dam on 12 Calves: Range 65-96 Ave. 83# Cow Wt. 1285												
	BF .04	HB 192 GM 49 Thick cow family. He has a weaning ratio of 106 and his dam has a MPPA of 108. Three maternal brothers have Rib Eyes of 13.48, 12.29 and 14.87 with one Choice plus, one Choice and one Choice minus. Top 1% of the breed for Milk and 7% Stay.												
R93w	BIG JON 3029 4150010	P	4/12/19	98	457	605	596	2.84	712	4.14	806	3.48	3.32	\$3,200
	Beckton Warrior R577 (1672X) x Shoco Firefly V83 (687M) x CFLD Rebellas Robinhood (R722) x R410 Frame Score 6.5													
	PB 1A 100%		C.E. 10 *	B.W. -0.1	W.W. 63	Y.W. 109	M.E. 109				1 MILK	21 STAY	18	
	CARCASS		Dam: 13		-1.1	59	108				4	22	18	
	MA .44		Sire: 6		1	67	110				-1	21	18	
	RE .31	BW History of Dam on 8 Calves: Range 70-98 Ave. 80# Cow Wt. 1455												
	BF .03	HB 192 GM 50 Weaning ratio of 110 and the pedigree of Big Jon and Warrior are bulls with performance and thickness. Four maternal brothers have Rib Eyes of 16.09, 13.37, 14.36 and 13.18, all Choice plus marbling close to Prime. His dam has a MPPA of 104. Top 1% of the breed for ADG, 4% Yearling Wt., 8% Rib Eye, 12% Grid Master and 13% Weaning Wt.												
R94w	SOVERIGN 5282 4150078	P	4/15/19	93	444	592	606	3.31	682	2.71	790	4.0	3.3	\$3,000
	Beckton Accent W226 (1902A) x Larson Timberland 319-8 (1048R) x MTN View Robinhood 987 (757M) Frame Score 6.6													
	PB 1A 100%		C.E. 16 *	B.W. -2.5	W.W. 54	Y.W. 89	M.E. 89				-1 MILK	26 STAY	19	
	CARCASS		Dam: 14		-1.9	56	98				1	26	21	
	MA .34		Sire: 19		-3.2	52	80				-2	26	17	
	RE -.09	BW History of Dam on 5 Calves: Range 64-100 Ave. 85# Cow Wt. 1335												
	BF .02	HB 207 GM 48 Younger bull with bred alike EPD's. He has a weaning ratio of 108 and his dam has a MPPA of 104. Two maternal brothers have Rib Eyes of 16.01 and 14.81, Choice marbling. Top 4% of the breed for Herd Builder, 9% Stay, 12% CED and 18% Milk.												
R95w	IMPRESSION 4150162	P	4/27/19	78	436	638	580	2.94	684	3.71	744	2.22	2.93	\$3,200
	Larson Totem 150 (2007B) x DKK Priority Rock 719 (1616X) x Beckton Hustler N859 (1085R) x 4971 Frame Score 5.31													
	PB 1A 100%		C.E. 15 *	B.W. -2.7	W.W. 60	Y.W. 99	M.E. 99				2 MILK	24 STAY	20	
	CARCASS		Dam: 9		2.1	69	120				4	28	19	
	MA .47		Sire: 20		-7.5	52	78				1	21	22	
	RE .05	BW History of Dam on 5 Calves: Range 52-107 Ave. 79# Cow Wt. 1380												
	BF .04	HB 212 GM 48 This bulls dam is a twin to the dam of R87W. Youngest calf but he is growing well. He has a weaning ratio of 116 and ranked 6/85 and his dam has a MPPA of 109. This is her first bull calf. Top 4% of the breed for Herd Builder, 7% Stay, 11% Yearling Wt., 12% Weaning Wt. and CED, and 14% for ADG.												



Keep the Tags – Keep the Premiums!

**1234567
RED ANGUS**

Feeder Calf Certification Program

- Traceability to at least 50% Red Angus genetics
- Source verified to ranch of origin
- Group age

**USDA
PROCESS
VERIFIED**

Ranch Tested. Rancher Trusted.

Red Angus

www.RedAngus.org
(940) 387-3502

Simmental Sale Bulls



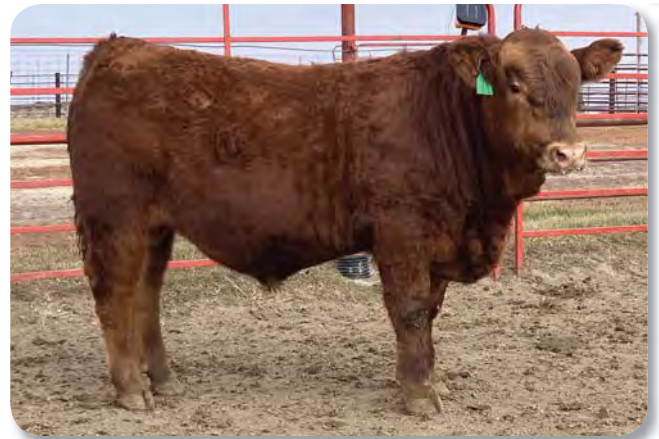
1G – 82# BW, Red Nation son



3G – All Along x Otis son, gaining 3.89 lbs/day



7G – Blaze-faced Dakota son, 87# BW



11G – All Along son, gaining 4.22 lbs/day



16G – 6.34 frame All Along son, gaining 4.18 lbs/day



22G – All Along x Dakota son, gaining 4.19 lbs/day



Simmental Sale Bulls

Tag	Sire	Poll Horn	Birth Date	Birth Wt.	9-3 Wt.	205 Adj. Wt.	10-23 Wt.	49 Day ADG	11-20 Wt.	28 Day ADG	12-17 Wt.	27 Day ADG	105 Day ADG	Price	
1G	RED NATION	DP	2/18/19	82	550	586	724	3.55	838	4.07	888	1.81	3.22	\$3,200	
	Red	OLF Otis A90 (1355C) x SRF Shear Force 05U (1168X) x SF Earthquake K282 (1115U) x 907L													
	PB Sim	C.E.	17.4	B.W.	-3.6	W.W.	61.1	Y.W.	87.6	M.C.E.	10.3	MILK	32.1	STAY	18
	CARCASS	Dam:	18.8		-4.1		51.6		83.1		13.3		34.4	18.5	
	MA -.09	Sire:	13.1		-0.3		80.1		106.2		7.3		27.8	17.5	
	RE .68	BW History of Dam on 3 Calves: Range 81-91 Ave. 85#													
	BF .116	API 135 TI 70.1 DNA Homozygous Red Looks like his sire, Red Nation, with lots of natural thickness and deep													
	3614193	bodied. Two maternal brothers have Rib Eyes of 13.62 and 15.01, one Choice and one Choice Minus. More of a calving ease pedigree. 27G and R6Y are out of the same cow family, 1168X.													
2G	DAKOTA U653	DP	2/23/19	108	602	635	822	4.49	928	3.79	1005	2.85	3.84	\$3,200	
	Red	LSF Red Dream 3U (1170X) x LRS Red Reality 33J (952M) x ASR Bold Red One H860 (895K) x 653B													
	PB Sim	C.E.	10.2	B.W.	2.8	W.W.	80.2	Y.W.	128.3	M.C.E.	7	MILK	24.4	STAY	21.1
	CARCASS	Dam:	10.5		2		64.3		96.3		6.9		27.8	19.7	
	MA -.01	Sire:	11.3		2.6		93.9		156.8		7		21.5	22.5	
	RE 1.01	BW History of Dam on 8 Calves: Range 86-108 Ave. 96#													
	BF -.126	API 135.3 TI 75.4 DNA Homozygous Red Thick Dakota son with a weaning ratio of 103. His dam has a average weaning													
	3614271	ratio of 105 and yearling ratio of 104. Four maternal brothers have Rib Eyes of 15.28, 14.84, 13.58 and 14.02, one Choice Plus, two Choice and one Select.													
3G	ALL ALONG	DP	2/24/19	96	636	712	854	4.45	946	3.29	1045	3.67	3.89	\$3,200	
	Red	OLF Otis A90 (1371D) x SRF Shear Force 05U (1212Y) x LSF Topcut 24R (1129U) x 972N													
	PB Sim	C.E.	12.8	B.W.	0.5	W.W.	84.7	Y.W.	126.7	M.C.E.	9.3	MILK	26.8	STAY	17.8
	CARCASS	Dam:	15.3		-1.1		62.6		96.5		12		36.2	17.7	
	MA .10	Sire:	10.9		1.6		88.7		131.6		6.7		21.6	17.8	
	RE 1.02	BW History of Dam on 2 Calves: Range 71-96 Ave. 84#													
	BF -.123	API 142.5 TI 83.8 DNA Homozygous Red The All Along calves have length and natural thickness. He has a weaning ratio													
	3614258	of 116 and ranked 4/39. This is his dams first Simmental sired calf. Same cow family as 18G. There is a blaze face dam way back in his pedigree.													
4G	CLINT C45	DP	2/28/19	102	516	593	696	3.67	790	3.36	860	2.59	3.28	\$3,200	
	Red	OLF Otis A90 (1376D) x HSR Dakota Beef U653 (1244Z) x SF Earthquake K282 (1096T) x 862H													
	PB Sim	C.E.	8	B.W.	2.3	W.W.	70.1	Y.W.	109	M.C.E.	6.5	MILK	23.3	STAY	17.8
	CARCASS	Dam:	15.1		-1.3		63.9		106.1		11.4		31.4	19.4	
	MA -.08	Sire:	1.5		5.3		80.6		117.5		1.7		14.1	16.1	
	RE .86	BW History of Dam on 2 Calves: Range 70-102 Ave. 86#													
	BF -.124	API 118 TI 67.5 DNA Homozygous Red Bred in natural thickness. This is the first Simmental sired calf out of this dam. She													
	3614211	weaned off 45% of her body weight in calf with no creep feed just milk and grass. Bred alike Weaning and Yearling Wt. EPD's.													
5G	RED NATION	DP	3/1/19	93	500	534	684	3.76	794	3.93	902	4.0	3.83	\$3,200	
	Red	HSR Dakota Beef U653 (1240Z) x SF Earthquake K282 (983N) x MV Red Light 406 (882K) x 670B													
	PB Sim	C.E.	12.6	B.W.	-0.1	W.W.	80.1	Y.W.	120.6	M.C.E.	7.3	MILK	27.5	STAY	20.8
	CARCASS	Dam:	12.2		0.1		80		135		7.3		27.2	24	
	MA .02	Sire:	13.1		-0.3		80.1		106.2		7.3		27.8	17.5	
	RE .81	BW History of Dam on 7 Calves: Range 62-100 Ave. 84#													
	BF -.116	API 142.7 TI 79.4 DNA Homozygous Red A twin that has developed well. Bred alike EPD's for consistency in his													
	3614246	offspring. His dam has a average weaning ratio of 103. Same cow family as the 14G bull. A maternal brother has a Rib Eye													
	TWIN	of 16.46, Choice Plus marbling.													
6G	CLINT C45	DP	3/3/19	107	596	687	794	4.04	928	4.79	1015	3.22	3.99	\$3,200	
	Red	SRF Shear Force 05U (1364D) x SF Earthquake K282 (1027R) x BBS Zima D55 (914L) x 733C													
	PB Sim	C.E.	5.9	B.W.	3.8	W.W.	84.6	Y.W.	126.9	M.C.E.	5.3	MILK	20.3	STAY	18.6
	CARCASS	Dam:	12.4		0.2		72.3		112.9		8.9		30.3	21.1	
	MA -.04	Sire:	1.5		5.3		80.6		117.5		1.7		14.1	16.1	
	RE .81	BW History of Dam on 2 Calves: Range 81-107 Ave. 94#													
	BF -.124	API 121.1 TI 74.2 DNA Homozygous Red First Simmental sired calf out of this female. There is some size in this cow													
	3614262	family but they have lots of natural thickness. He has a weaning ratio of 112 and ranked 8/39. Performance in his Weaning and Yearling EPD's.													

Simmental Sale Bulls



Tag	Sire	Poll Horn	Birth Date	Birth Wt.	9-3 Wt.	205 Adj. Wt.	10-23 Wt.	49 Day ADG	11-20 Wt.	28 Day ADG	12-17 Wt.	27 Day ADG	105 Day ADG	Price
7G	DAKOTA U653	DP	3/5/19	87	546	607	734	3.84	836	3.64	910	2.74	3.47	\$3,200
	Red Blz	SF Earthquake K282 (1090T) x ASR Cactus Red Z002 (816F) x C&B Junior (653B) Frame Score 6.63												
	PB Sim	C.E. 9.3 B.W. 2.3 W.W. 81.8 Y.W. 133.5 M.C.E. 5.5 MILK 26.9 STAY 21.8												
	CARCASS	Dam: 4.5 4.7 77.6 122.3 3.9 30.5 21												
	MA .06	Sire: 11.3 2.6 93.9 156.8 7 21.5 22.5												
	RE 1.07	BW History of Dam on 11 Calves: Range 87-120 Ave. 101# Cow Wt. 1470												
	BF -.118	API 141.1 TI 78.9 DNA Homozygous Red Only Blazed face bull out of blazed face females. His dam has a average weaning ratio of 107 and yearling ratio of 110. A full brother has a Rib Eye of 16.57 and Choice marbling. Two maternal brothers have Rib Eyes of 15.15 and 13.79, both Choice marbling. R10Y is also out of this cow family, 1090T.												
	3614226													
8G	RED NATION	DP	3/8/19	81	474	521	624	3.06	706	2.93	772	2.44	2.84	\$3,000
	Red	SF Earthquake K282 (1159W) x BBS Zima D55 (880K) x MV Red Light 406 (830G) x 643B Frame Score 5.68												
	PB Sim	C.E. 8.4 B.W. 1.9 W.W. 77.4 Y.W. 112.1 M.C.E. 4.2 MILK 23 STAY 20.4												
	CARCASS	Dam: 3.7 4 74.8 118 1.1 18.1 23.3												
	MA -.11	Sire: 13.1 -0.3 80.1 106.2 7.3 27.8 17.5												
	RE .59	BW History of Dam on 14 Calves: Range 74-102 Ave. 86# Cow Wt. 1430												
	BF -.22	API 124 TI 70.8 DNA Homozygous Red His dam raised both calves, mixed sex, and this is her fifth set of twins. Her average calf birthweight is lighter because of all of the twins. She has a lot of fertility because she always breeds back.												
	3614273	Three maternal brothers have Rib Eyes of 15.01, 14.41 and 12.12, two Choice Minus and one Select.												
	TWIN													
9G	ALL ALONG	DP	3/11/19	97	532	597	740	4.24	838	3.5	936	3.63	3.85	\$3,200
	Red	HSR Dakota Beef U653 (1176X) x SF Earthquake K282 (1037R) x NLC Good A Nuff 33G (910L) x 828G Frame Score 5.48												
	PB Sim	C.E. 12.4 B.W. 0.1 W.W. 81 Y.W. 129.1 M.C.E. 7 MILK 24.9 STAY 20.9												
	CARCASS	Dam: 12.7 -0.2 80.3 136.8 7.2 26.7 23.9												
	MA .11	Sire: 10.9 1.6 88.7 131.6 6.7 21.6 17.8												
	RE 1.14	BW History of Dam on 6 Calves: Range 70-97 Ave. 85# Cow Wt. 1470												
	BF -.121	API 149.5 TI 82.6 DNA Homozygous Red Natural thickness with length. The All Along calves have real eye appeal and combine that with the sires on the dams side makes great offsprings. Two maternal brothers have Rib Eyes of 14.35 and 17.64, one Choice, one Select. Great Weaning and Yearling EPD's.												
	3614269													
10G	ALL ALONG	DP	3/11/19	98	514	617	692	3.63	794	3.64	852	2.15	3.22	\$3,200
	Red	SRF Shear Force 05U (1378D) x SF Earthquake K282 (1040R) x C&B Incumbent 4131 (784E) x 402T Frame Score 6.23												
	PB Sim	C.E. 12.4 B.W. 0.2 W.W. 67.2 Y.W. 103 M.C.E. 9.1 MILK 23.3 STAY 18.3												
	CARCASS	Dam: 14.6 -2 46.5 75.3 11.4 24.7 18.7												
	MA .13	Sire: 10.9 1.6 88.7 131.6 6.7 21.6 17.8												
	RE .82	BW History of Dam on 2 Calves: Range 84-98 Ave. 91# Cow Wt. 1340												
	BF -.120	API 137.8 TI 73.7 DNA Homozygous Red First Simmental sired calf out of this female. There are blazed faced females in his background.												
	3614204													
11G	ALL ALONG	DP	3/11/19	117	642	729	860	4.45	1000	5.0	1085	3.15	4.22	\$3,200
	Red	WS Beef Maker R13 (1145W) x DSR Top Cut N64 (1031R) x KS Blizzard L59 (981N) x 909L Frame Score 6.8												
	PB Sim	C.E. 7.7 B.W. 3.9 W.W. 97 Y.W. 138.3 M.C.E. 5.3 MILK 21.8 STAY 18.7												
	CARCASS	Dam: 7.7 3 80.8 109.8 4 27.6 19.6												
	MA .17	Sire: 10.9 1.6 88.7 131.6 6.7 21.6 17.8												
	RE 1.11	BW History of Dam on 8 Calves: Range 84-125 Ave. 103# Cow Wt. 1480												
	BF -.133	API 139.2 TI 87.3 DNA Homozygous Red His dams pedigree is more moderate framed females with lots of natural thickness and exceptional Milk. Bred alike EPD's for consistency in his calves. He has a weaning ratio of 119 and ranked 2/39. His dam has a average weaning ratio of 107 and yearling ratio of 103. A maternal brother has a Rib Eye of 16.68, Choice Minus marbling.												
	3614256													
12G	DAKOTA U653	DP	3/13/19	111	628	721	820	3.92	912	3.29	958	1.70	3.14	\$3,200
	Red	SF Earthquake K282 (1106T) x NLC Good A Nuff 33G (908L) x Burgandy LSF 15XW (626A) x 467W Frame Score 6.7												
	PB Sim	C.E. 9.2 B.W. 3.3 W.W. 89.2 Y.W. 145.7 M.C.E. 7.3 MILK 25.4 STAY 23.8												
	CARCASS	Dam: 9.7 1.5 63.5 104.5 7.5 34.2 25.1												
	MA -.02	Sire: 11.3 2.6 93.9 156.8 7 21.5 22.5												
	RE 1.10	BW History of Dam on 11 Calves: Range 84-111 Ave. 97# Cow Wt. 1350												
	BF -.118	API 142.4 TI 80.3 DNA Homozygous Red Weaning ratio of 117 and Ranked 3/39. His dam has a average weaning ratio of 107 and yearling ratio of 103. Six maternal brothers have Rib Eyes of 13.97, 13.93, 15.66, 15.52, 14.56 and 16.62, five Choice one Select.												
	3614235													



Simmental Sale Bulls

Tag Sire	Poll Horn	Birth Date	Birth Wt.	9-3 Wt.	205 Adj. Wt.	10-23 Wt.	49 Day ADG	11-20 Wt.	28 Day ADG	12-17 Wt.	27 Day ADG	105 Day ADG	Price		
13G	ALL ALONG	DP	3/14/19	99	520	586	748	4.65	812	2.29	896	3.4	3.58	\$3,200	
	Red	HSR Dakota Beef U653 (1197Y) x SF Earthquake K282 (1092T) x C&B Incumbent 4131 (850H) x 315W													
	PB Sim	C.E.	10.6	B.W.	1.6	W.W.	83.1	Y.W.	129.4	M.C.E.	7	MILK	25.3	STAY	20.9
	CARCASS	Dam:	8.8		3.2		87.2		141.2		7.2		26.7	24	
	MA .12	Sire:	10.9		1.6		88.7		131.6		6.7		21.6	17.8	
	RE 1.15	BW History of Dam on 7 Calves: Range 84-106 Ave. 95#													
	BF -.119	API 145.2 TI 81.8 DNA Homozygous Red All Along works so well on our Dakota and Earthquake females. It makes three generations of bred alike genetics. His dam has a average weaning ratio of 107 and yearling ratio of 104. Two maternal brothers have Rib Eyes of 17.26 and 13.95, both Choice marbling.													
	3614185														
14G	ALL ALONG	DP	3/14/19	91	548	666	776	4.65	842	2.36	918	2.81	3.52	\$3,200	
	Red	OLF Otis A90 (1385D) x HSR Dakota Beef U653 (1240Z) x SF Earthquake K282 (983N) x 882K													
	PB Sim	C.E.	13.8	B.W.	-0.6	W.W.	81.8	Y.W.	125.9	M.C.E.	8.9	MILK	24.9	STAY	18.5
	CARCASS	Dam:	16		-2		67.6		110.4		11.2		30	19.2	
	MA .12	Sire:	10.9		1.6		88.7		131.6		6.7		21.6	17.8	
	RE 1.08	BW History of Dam on 2 Calves: Range 91-93 Ave. 92#													
	BF -.122	API 147.8 TI 84 DNA Homozygous Red First Simmental sired calf. He has a weaning ratio of 108 and ranked 11/39. His dam has a average weaning ratio of 101 and yearling of 100. A maternal brother has a Rib Eye of 11.96, Select marbling. He is out of the same cow family as 5G.													
	3614200														
16G	ALL ALONG	DP	3/18/19	106	566	697	784	4.45	922	4.93	1005	3.07	4.18	\$3,200	
	Red	OLF Otis A90 (1384D) x SRF Shear Force 05U (1235Z) x SF Earthquake K282 (1008P) x 890K													
	PB Sim	C.E.	12	B.W.	1.5	W.W.	84.8	Y.W.	126.8	M.C.E.	9.6	MILK	24.6	STAY	17.9
	CARCASS	Dam:	16.2		-1.7		63.1		96.1		12.5		31.7	17.9	
	MA .10	Sire:	10.9		1.6		88.7		131.6		6.7		21.6	17.8	
	RE 1.02	BW History of Dam on 2 Calves: Range 69-106 Ave. 88#													
	BF -.123	API 139.8 TI 82.3 DNA Homozygous Red Lots of natural thickness and out of a Otis female. He has a weaning ratio of 114 and ranked 5/39.													
	3614209														
17G	CLINT C45	DP	3/19/19	103	512	601	636	2.53	734	3.5	836	3.78	3.09	\$3,000	
	Red	LSF Topcut 24R (1123U) x SF Earthquake K282 (1020P) x MV Red Light 406 (882K)													
	PB Sim	C.E.	6.6	B.W.	2.1	W.W.	67.5	Y.W.	97	M.C.E.	4.5	MILK	23.4	STAY	19.1
	CARCASS	Dam:	11.4		-0.8		58.1		81.7		7.4		31.8	22.2	
	MA -.06	Sire:	1.5		5.3		80.6		117.5		1.7		14.1	16.1	
	RE .62	BW History of Dam on 9 Calves: Range 80-113 Ave. 95#													
	BF -.131	API 117.5 TI 65.6 DNA Homozygous Red His dam has a average weaning ratio of 100 and yearling ratio of 102. Four maternal brothers have Rib Eyes of 15.56, 12.94, 15.12 and 14.90 all Choice marbling.													
	3614267														
18G	ALL ALONG	DP	3/19/19	119	534	612	720	3.8	816	3.43	908	3.41	3.56	\$3,200	
	Red	SRF Shear Force 05U (1212Y) x LSF Topcut 24R (1129U) x SF Earthquake K282 (972N) x 559Z													
	PB Sim	C.E.	10.5	B.W.	2.2	W.W.	78.1	Y.W.	117.4	M.C.E.	8.3	MILK	28.9	STAY	19.4
	CARCASS	Dam:	12.7		0.3		67.3		101.8		10		36.1	21	
	MA .15	Sire:	10.9		1.6		88.7		131.6		6.7		21.6	17.8	
	RE .98	BW History of Dam on 6 Calves: Range 82-119 Ave. 100#													
	BF -.122	API 139.9 TI 78.9 DNA Homozygous Red More frame in this cow family and goes back to a white face female. His dam has a average weaning ratio of 101 and yearling ratio of 104. A maternal brother has a Rib Eye of 14.0, Choice marbling. Same cow family as 3G, 1212Y.													
	3614186														
21G	ALL ALONG	DP	3/21/19	98	566	661	770	4.16	854	3.0	938	3.11	3.54	\$3,200	
	Red	SRF Shear Force 05U (1289A) x SF Earthquake K282 (1100T) x C&B Junior (802E) x 588A													
	PB Sim	C.E.	12.3	B.W.	0.2	W.W.	79.6	Y.W.	120.4	M.C.E.	7.9	MILK	25.7	STAY	18.5
	CARCASS	Dam:	13.4		-1		63.6		99.9		9.2		31.4	19.1	
	MA .13	Sire:	10.9		1.6		88.7		131.6		6.7		21.6	17.8	
	RE .96	BW History of Dam on 4 Calves: Range 76-117 Ave. 93#													
	BF -.117	API 143.3 TI 81.5 DNA Homozygous Red He has a weaning ratio of 108 and ranked 12/39 and his dam has a average weaning ratio of 101. A Red Angus maternal brother has a Rib Eye of 13.98, Choice marbling. Grand dam, 1100T, is a twin sister to the grand dam of 24G.													
	3614192														

Simmental Sale Bulls



Tag	Sire	Poll	Birth	Birth	9-3	205	10-23	49	11-20	28	12-17	27	105	Price	
	Color	Horn	Date	Wt.	Wt.	Adj.	Wt.	Day	Wt.	Day	Wt.	Day	Day		
	%Sim Red Ang	Scur				Wt.		ADG		ADG		ADG	ADG		
	Calf Reg. #	Dam	EPD's												
22G	ALL ALONG	DP	3/21/19	104	590	695	832	4.94	932	3.57	1030	3.63	4.19	\$3,200	
	Red	HSR Dakota Beef U653 (1322B) x SF Earthquake K282 (1109T) x DSR Stretch X 404Z (670B) x 467W													
	PB Sim	C.E.	11.2	B.W.	1.6	W.W.	91.3	Y.W.	142.6	M.C.E.	7.7	MILK	25	STAY	20
	CARCASS	Dam:	12.9		0.1		78.2		131.4		8.6		32.1		22.2
	MA .14	Sire:	10.9		1.6		88.7		131.6		6.7		21.6		17.8
	RE 1.13	BW History of Dam on 3 Calves: Range 86-104 Ave. 97#													
	BF -.120	API 148.4 TI 87.3 DNA Homozygous Red His dam has lots of milk. She has a average weaning ratio of 110 and he has													
	3614253	a weaning ratio of 113 and ranked 6/39. A maternal brother has a Rib Eye of 16.88, Choice marbling.													
24G	CLINT C45	DP	3/23/19	112	546	641	706	3.27	788	2.93	870	3.04	3.09	\$3,000	
	Red	HSR Dakota Beef U653 (1287A) x SF Earthquake K282 (1101T) x C&B Junior (802E) x 588A													
	PB Sim	C.E.	4.5	B.W.	4.4	W.W.	83.1	Y.W.	128.7	M.C.E.	3.7	MILK	18.7	STAY	20.1
	CARCASS	Dam:	9		2		79.1		130.2		5.7		24.8		24.1
	MA -.05	Sire:	1.5		5.3		80.6		117.5		1.7		14.1		16.1
	RE .93	BW History of Dam on 5 Calves: Range 68-128 Ave. 101#													
	BF -.122	API 120.9 TI 72.3 DNA Homozygous Red Weaning ratio of 104 and ranked 13/39 and his dam has a average weaning													
	3614191	ratio of 101. A maternal brother has a Rib Eye of 15.90, Choice marbling. Grand dam, 1101T, is a twin sister to the grand dam of 21G, 1100T.													
26G	ALL ALONG	DP	3/26/19	111	630	756	832	4.12	896	2.29	976	2.96	3.3	\$3,200	
	Red	SRF Shear Force 05U (1225Y) x ASR Bold Red One H860 (897K) x ASR Cactus Red (794E) x 653F													
	PB Sim	C.E.	8.1	B.W.	4.1	W.W.	96.9	Y.W.	143.4	M.C.E.	6.5	MILK	24.5	STAY	17.8
	CARCASS	Dam:	7.5		4.3		78.5		117.5		6.2		33.7		17.8
	MA .13	Sire:	10.9		1.6		88.7		131.6		6.7		21.6		17.8
	RE 1.00	BW History of Dam on 7 Calves: Range 82-136 Ave. 107#													
	BF -.126	API 135.7 TI 86.3 DNA Homozygous Red Top performing weaning weight bull with a ratio of 123 and ranked 1/39.													
	3614219	His dam has a average weaning ratio of 116 and yearling ratio of 108. Two maternal brothers have Rib Eyes of 15.90 and 14.59 both Choice marbling. In her calf birthweight information the 136# calf was out of Weston which was only here one year because he threw heavy birthweight calves which were steered.													
27G	ALL ALONG	DP	3/28/19	96	490	592	654	3.35	734	2.86	790	2.07	2.86	\$3,000	
	Red	SRF Shear Force 05U x (1168X) x SF Earthquake K282 (1115U) x 907L													
	PB Sim	C.E.	14.8	B.W.	-1.5	W.W.	68.5	Y.W.	105.1	M.C.E.	9.3	MILK	28.1	STAY	20
	CARCASS	Dam:	18.3		-4.2		55.5		88.7		11.8		32.9		22.1
	MA .11	Sire:	10.9		1.6		88.7		131.6		6.7		21.6		17.8
	RE .93	BW History of Dam on 8 Calves: Range 62-102 Ave. 82#													
	BF -.117	API 147.2 TI 76.9 DNA Homozygous Red Four maternal brothers have Rib Eyes of 13.18, 15.27, 17.07 and 13.67 with													
	3614280	one Choice Plus, two Choice and one Select. The 1G bull and R6Y hybrid bull are out of the same cow family, 1168X.													
29G	ALL ALONG	DP	4/3/19	111	504	624	688	3.73	780	3.29	856	2.81	3.35	\$3,000	
	Red	SRF Shear Force 05U (1331B) x SF Earthquake K282 (1032R) x C&B Incumbent 4131 (686B) x Z533													
	PB Sim	C.E.	9.8	B.W.	2.7	W.W.	81.9	Y.W.	124.1	M.C.E.	7.8	MILK	23.9	STAY	19.4
	CARCASS	Dam:	11.4		1.3		72.4		111.8		9		26.7		20.9
	MA .14	Sire:	10.9		1.6		88.7		131.6		6.7		21.6		17.8
	RE .99	BW History of Dam on 3 Calves: Range 74-111 Ave. 91#													
	BF -.118	API 139.1 TI 79.7 DNA Homozygous Red Younger All Along bull with bred alike EPD's. He has a weaning ratio of 102													
	3614248	and his dam has a average weaning ratio of 104. Same cow family as R2Y.													
33G	CLINT C45	DP	4/19/19	105	512	691	664	3.10	704	1.43	814	4.07	2.88	\$3,000	
	Red	SRF Shear Force 05U (1205Y) x SF Earthquake K282 (1066S) x C.D. Correct Design 11SW (588A) x 457Y													
	PB Sim	C.E.	7.8	B.W.	2.4	W.W.	76.4	Y.W.	113.8	M.C.E.	6.3	MILK	21.7	STAY	18.9
	CARCASS	Dam:	15		-1.4		56.3		87.8		11		33.1		21.7
	MA -.03	Sire:	1.5		5.3		80.6		117.5		1.7		14.1		16.1
	RE .78	BW History of Dam on 5 Calves: Range 76-117 Ave. 97#													
	BF -.122	API 123.9 TI 71.7 DNA Homozygous Red Young performing son of Clint C45. He has a weaning ratio of 113 and ranked													
	3614221	7/39. His dam has a average weaning ratio of 106 and yearling ratio of 105. A maternal brother has a Rib Eye of 16.69, Choice Plus marbling.													



Simmental Sale Bulls

Tag	Sire	Poll	Birth	Birth	9-3	205	10-23	49	11-20	28	12-17	27	105	Price	
	Color	Horn	Date	Wt.	Wt.	Adj.	Wt.	Day	Wt.	Day	Wt.	Day	Day		
	%Sim Red Ang	Scur				Wt.		ADG		ADG		ADG	ADG		
	Calf Reg. #	Dam	EPD's												
34G	ALL ALONG	DP	4/27/19	98	445	622	636	3.9	706	2.5	794	3.26	3.32	\$3,000	
	Red	SRF Shear Force 05U (1298A) x LSF Topcut 24R (1111T) x SF Earthquake K282 (1023P) x 910L													
	PB Sim	C.E.	11.7	B.W.	0.9	W.W.	77	Y.W.	113.2	M.C.E.	7.2	MILK	25.3	STAY	19
	CARCASS	Dam:	11.3		1.4		67.3		98.1		7.7		28.6	20.1	
	MA .14	Sire:	10.9		1.6		88.7		131.6		6.7		21.6	17.8	
	RE .96	BW History of Dam on 4 Calves: Range 91-129 Ave. 107#													
	BF -.121	API 140.8 TI 78.9 DNA Homozygous Red Youngest Simmental bull offered but he has a great pedigree and bred alike													
	3614234	EPD's. His dam has a average weaning ratio of 101. A maternal brother has a Rib Eye of 16.17, Choice Minus marbling.													

Notes

Hybrid Sale Bulls



R1Y – Cardinal x Clint, weaning ratio 111



R2Y – 6 frame Scamp x Clint son



R5Y – Emcee x Shear Force son, 77# BW



R9Y – 5.77 frame Dakota son



R12Y – Brilliance son with thickness



R15Y – Heritage x Dakota, 5.81 frame



Hybrid Sale Bulls

Tag	Sire	Poll	Birth	Birth	9-3	205	10-23	49	11-20	28	12-17	27	105	Price	
		Horn	Date	Wt.	Wt.	Adj.	Wt.	Day	Wt.	Day	Wt.	Day	Day		
		Scur				Wt.		ADG		ADG		ADG	ADG		
	%Sim Red Ang Calf Reg. #	Dam	EPD's												
R1Y	CARDINAL E372	DP	2/14/19	70	568	625	760	3.92	860	3.57	950	3.33	3.64	\$3,200	
	Red	RFS Clint C45 1392E (PB Sim) x TT Thundar 859Z (1328B) x SF Earthquake K282 (1154W) x 952M													
	1/2 Red Angus	C.E.	15	B.W.	-3.5	W.W.	59	Y.W.	89	M.E.	-2	MILK	22	STAY	15
	CARCASS	Dam:	5		2.7		76		113		NA		21		17
	MA .21	Sire:	24		-9.6		42		65		-4		22		14
	RE .58	BW History of Dam on 1 Calf: BW 70# 1st Calf Heifer													
	BF -.04	HB 179 GM 51 DNA: Homozygous Red Weaning ratio of 111 and ranked 4/15. He is in the top 1% of the breed for Rib Eye, 11% Grid Master and 12% Birthweight. His dam weaned off 50% of her body weight in calf and that was without creep feed and she is a first calf heifer.													
R2Y	SCAMP B504	DP	2/15/19	80	536	597	690	3.14	782	3.29	878	3.56	3.26	\$3,200	
	Red	RFS Clint C45 1407E (PB Sim) x SRF Shear Force 05U (1331B) x SF Earthquake K282 (1032R) x 686B													
	1/2 Red Angus	C.E.	13	B.W.	-2.6	W.W.	61	Y.W.	92	M.E.	-4	MILK	24	STAY	16
	CARCASS	Dam:	5		2.9		74		111		NA		23		18
	MA .13	Sire:	20		-8.1		47		72		-8		24		14
	RE .35	BW History of Dam on 1 Calf: BW 80# 1st Calf Heifer													
	BF -.04	HB 179 GM 51 DNA: Homozygous Red Weaning ratio of 106 and ranked 7/15. Top 6% of the breed for Rib Eye. Same cow family as 29G.													
R4Y	SCAMP B504	DP	2/18/19	86	443	505	634	3.9	714	2.86	804	3.33	3.44	\$3,000	
	Red	OLF Otis A90 1406E (PB Sim) x SRF Shear Force 05U (1229Y) x LSF Topcut 24R (1117U) x EQ 1035R													
	1/2 Red Angus	C.E.	18	B.W.	-4.7	W.W.	53	Y.W.	80	M.E.	-4	MILK	27	STAY	16
	CARCASS	Dam:	16		-1.3		59		89		NA		30		19
	MA .13	Sire:	20		-8.1		47		72		-8		24		14
	RE .32	BW History of Dam on 1 Calf: BW 86# 1st Calf Heifer													
	BF -.04	HB 194 GM 49 DNA: Homozygous Red Top 1% of the breed for Milk, 3% for CED, Birthweight and CEM and 6% for Rib Eye.													
R5Y	EMCEE Z289	DP	2/22/19	77	590	667	696	2.16	790	3.36	880	3.33	2.76	\$3,200	
	Red	SRF Shear Force 05U 1405E (PB Sim) x SF Earthquake K282 (1106T) x NLC Good A Nuff 33G (908L) x 626A													
	1/2 Red Angus	C.E.	17	B.W.	-4.4	W.W.	53	Y.W.	82	M.E.	-3	MILK	32	STAY	17
	CARCASS	Dam:	14		-0.1		65		104		NA		38		22
	MA .23	Sire:	21		-8.6		41		61		-6		26		12
	RE .43	BW History of Dam on 1 Calf: BW 77# 1st Calf Heifer													
	BF -.04	HB 196 GM 51 DNA: Homozygous Red Top performing hybrid bull with a weaning ratio of 118 and ranked 1/15. Top 2% of the breed for Milk, 3% Rib Eye, 5% CED and 8% Birthweight. His dam weaned off 51% of her body weight in calf with no creep feed and she is a first calf heifer.													
R6Y	SCAMP B504	DP	2/22/19	70	506	577	668	3.31	760	3.29	834	2.74	3.12	\$3,200	
	Red	HSR Dakota Beef U653 1397E (PB Sim) x SRF Shear Force 05U (1168X) x SF Earthquake K282 (1115U) x 907L													
	1/2 Red Angus	C.E.	18	B.W.	-5	W.W.	60	Y.W.	96	M.E.	-4	MILK	27	STAY	19
	CARCASS	Dam:	16		-1.9		73		120		NA		29		23
	MA .20	Sire:	20		-8.1		47		72		-8		24		14
	RE .47	BW History of Dam on 1 Calf: BW 70# 1st Calf Heifer													
	BF -.04	HB 221 GM 52 DNA: Homozygous Red Weaning ratio of 102 and ranked 9/15. He is out of the same cow family as the 1G and 27G Simmental bulls, 1168X. He is in the top 2% of the breed for Herd Builder, and Rib Eye, 3% Grid Master, 4% CED, 5% Birthweight, 7% CEM, 10% Milk and 13% Stay.													
R8Y	RED NATION	DP	2/26/19	80	433	462	608	3.57	694	3.07	768	2.74	3.19	\$3,000	
	Red	BSF Hilltop T096 2135C (PB Red Ang) x BSF Nebula U049 (1926A) x Larson Timberland 319-8 (1123R) x 478K													
	1/2 Sim	C.E.	14	B.W.	-1.8	W.W.	61	Y.W.	88	M.E.	-1	MILK	21	STAY	18
	CARCASS	Dam:	16		-3.9		41		67		-1		14		19
	MA .12	Sire:	13		0.3		82		109		NA		27		17
	RE .27	BW History of Dam on 3 Calves: Range 43-80 Ave. 61#													
	BF -.04	HB 188 GM 49 DNA: Homozygous Red His figures are from the Red Angus Association and he can only be registered through them. This is the first bull calf for this dam. He is in the top 12% of the breed for CED. Our Red Nation calves show a lot of natural thickness and this calf is more moderate framed.													

Hybrid Sale Bulls



Tag	Sire	Poll	Birth	Birth	9-3	205	10-23	49	11-20	28	12-17	27	105	Price	
	Color	Horn	Date	Wt.	Wt.	Adj.	Wt.	Day	Wt.	Day	Wt.	Day	Day		
	%Sim Red Ang	Scur				Wt.		ADG		ADG		ADG	ADG		
	Calf Reg. #	Dam	EPD's												
R9Y	DAKOTA U653	DP	2/26/19	88	550	565	692	2.9	798	3.79	894	3.56	3.32	\$3,200	
	Red	LSFR Jubilation 42W 1891A (PB Red Ang) x Glacier Chateau 744 (680M) x Blue Ridge Power Pac (R620) Frame Score 5.77													
	1/2 Sim	C.E.	14.4	B.W.	-1.9	W.W.	63.3	Y.W.	102.9	M.C.E.	7.2	MILK	24.9	STAY	21.3
	CARCASS	Dam:	14.4		-3.4		49.3		73.3		7.3		24.5		20.1
	MA .20	Sire:	11.3		2.6		93.9		156.8		7		21.5		22.5
	RE .63	BW History of Dam on 5 Calves: Range 52-90 Ave. 75# Cow Wt. 1165													
	BF -.038	API 141.2 TI 70.5 DNA: Homozygous Red Typical Dakota son with natural thickness and eye appeal. He is in the top 1% of the breed for Herd Builder, Stay and Rib Eye, 2% Grid Master, 4% Weaning and Yearling Wt., 7% ADG and 9% Carcass Wt.													
R10Y	CARDINAL E372	DP	3/5/19	64	484	581	610	2.57	694	3.0	790	3.56	2.91	\$2,800	
	Red	SRF Shear Force 05U 1402E (PB Sim) x SF Earthquake K282 (1090T) x ASR Cactus Red Z002 (816F) x 653B Frame Score 5.38													
	1/2 Red Ang	C.E.	18	B.W.	-4.8	W.W.	54	Y.W.	85	M.E.	-2	MILK	28	STAY	17
	CARCASS	Dam:	13		-0.4		68		105		NA		34		20
	MA .22	Sire:	24		-9.2		41		64		-4		23		14
	RE .51	BW History of Dam on 1 Calf: BW 64# 1st Calf Heifer Cow Wt. 1160													
	BF -.04	HB 202 GM 51 DNA: Homozygous Red Grand dam of this bull, 1090T, is the dam of the 7G Simmental Blaze face bull. Weaning ratio of 103. Top 1% of the breed for Rib Eye, 2% CED, 4%CEM, 5% Birthweight, 9% Herd Builder, 11% Milk and 14% Grid Master.													
R11Y	CLINT C45	DP	3/9/19	108	471	499	692	4.51	778	3.07	854	2.81	3.65	\$3,200	
	Red	Beckton Hustler N859 1824Z (PB R Ang) x Shoc Kayak C80 (620L) x BJR Fire-Man 0150 (33BW) x Z003 Frame Score 6.19													
	1/2 Sim	C.E.	7.7	B.W.	1.7	W.W.	50.2	Y.W.	82.6	M.C.E.	3.8	MILK	20.6	STAY	17.3
	CARCASS	Dam:	14.2		-2.2		43.3		80.1		5.9		21.5		18.5
	MA .07	Sire:	1.5		5.3		80.6		117.5		1.7		14.1		16.1
	RE .36	BW History of Dam on 6 Calves: Range 50-108 Ave. 81# Cow Wt. 1175													
	BF -.061	API 106.1 TI 53.8 DNA: Homozygous Red Two maternal brothers have Rib Eyes of 14.17 and 12.19 both Choice marbling. Top 5% of the breed for Rib Eye and 6% for Grid Master.													
R12Y	BRILLIANCE 3212	DP	3/13/19	111	570	640	772	4.12	884	4.0	976	3.41	3.87	\$3,200	
	Red	Dillions K217 Red Dream 1121U (PB Sim) x SF Earthquake K282 (1068S) x C&B Junior (802E) Frame Score 7.0													
	1/2 Red Ang	C.E.	13	B.W.	-1.3	W.W.	62	Y.W.	101	M.E.	-4	MILK	31	STAY	21
	CARCASS	Dam:	11		0.3		65		100		-9		36		22
	MA .23	Sire:	16		-2.9		58		101		1		26		20
	RE .44	BW History of Dam on 8 Calves: Range 88-111 Ave. 98# Cow Wt. 1335													
	BF -.04	HB 218 GM 51 DNA: Homozygous Red Weaning ratio of 114 and ranked 2/15. His dam has a average weaning ratio of 106 and yearling ratio of 101. Four maternal brothers have Rib Eyes of 14.60, 14.73, 13.03 and 12.71 all Choice marbling. He is in the top 1% of the breed for Milk, 3% Rib Eye and Herd Builder, 4% Stay and 10% Grid Master.													
R13Y	IMPRESSION	DP/S	3/18/19	80	530	626	662	2.69	762	3.57	878	4.3	3.31	\$3,200	
	Red Broc	HSR Dakota Beef U653 1194X (PB Sim) x SF Earthquake K282 (1096T) x Red Light (862H) x 559Z Frame Score 5.52													
	1/2 Red Ang	C.E.	16.8	B.W.	-4.1	W.W.	66.1	Y.W.	107.1	M.E.	0	MILK	27	STAY	22.6
	CARCASS	Dam:	10.5		1.7		81.8		139		NA		32.8		24
	MA .37	Sire:	20		-7.5		52		78		1		21		22
	RE .60	BW History of Dam on 7 Calves: Range 80-111 Ave. 96# Cow Wt. 1460													
	BF -.027	API 161.6 TI 79.7 DNA: Heterozygous Red (dilutor) His figures are from the Simmental Association so he can only be registered through them. Weaning ratio of 111 and ranked 3/15. His dam has a average weaning ratio of 110 and yearling ratio of 111. A full brother has a Rib Eye of 16.70, Choice Minus marbling and four maternal brothers have Rib Eyes of 13.83, 18.41, 15.18 and 15.23, two Choice Plus and two Choice marbling. He does carry the dilution gene.													
R15Y	HERITAGE A533	DP	3/31/19	95	486	615	664	3.63	778	4.07	858	2.96	3.54	\$3,200	
	Red	HRS Dakota Beef U653 1340C (PB Sim) x GCF Mr Amigo (1206Y) x SF Earthquake K282 (1027P) x 914L Frame Score 5.81													
	1/2 Red Ang	C.E.	15.3	B.W.	-3	W.W.	66.3	Y.W.	105.2	M.C.E.	-3	MILK	20.5	STAY	17.8
	CARCASS	Dam:	12.9		-0.2		80.1		126.4		7.3		23.6		22.8
	MA .29	Sire:	18		-6.5		49.7		80		-6		18		14
	RE .56	BW History of Dam on 3 Calves: Range 75-95 Ave. 84# Cow Wt. 1305													
	BF -.035	API 143.3 TI 75.5 DNA: Homozygous Red Weaning ratio of 109. His dam has a average yearling ratio of 103. A maternal brother has a Rib Eye of 13.86, Choice marbling. His figures are through the Simmental Association and he can only be registered through them.													



Hybrid Sale Bulls

Tag	Sire	Poll	Birth	Birth	9-23	205	10-23	49	11-20	28	12-17	27	105	Price	
		Horn	Date	Wt.	Wt.	Adj.	Wt.	Day	Wt.	Day	Wt.	Day	Day		
		Scur				Wt.		ADG		ADG		ADG	ADG		
	Color	Dam													
	%Sim Red Ang	EPD'S													
R16Y	CLINT C45	DP	4/3/19	96	436	525	606	3.47	684	2.79	778	3.48	3.26	\$3,000	
	Red	Shoco Firefly V83 859N (PB Red Ang) x Glacier Granite 108 (278G) x ODP Quintock 0116 (2347) Frame Score 5.72													
	1/2 Sim	C.E.	8.1	B.W.	0.3	W.W.	47.5	Y.W.	73.3	M.C.E.	4.5	MILK	19.1	STAY	18.3
	CARCASS	Dam:	11.8		-1.8		36.3		60.5		7.3		19	20.5	
	MA .17	Sire:	1.5		5.3		80.6		117.5		1.7		14.1	16.1	
	RE .35	BW History of Dam on 17 Calves: Range 50-104 Ave. 79# Cow Wt. 1265													
	BF -.056	API 114.4 TI 55.9 DNA: Homozygous Red He has done well for the age of his dam and his weaning and yearling EPD's have stayed up. Seven maternal brothers have Rib Eyes of 12.28, 14.11, 14.37, 16.06, 14.08, 12.37 and 13.39, three almost Prime, three Choice Plus and one Choice Minus. He is in the top 6% of the breed for Rib Eye and ME and 7% for Grid Master.													

Notes

Yearling Heifers



Registered Seedstock & Show Heifer Prospects

(Complete Pedigrees Available)

Registered PB Red Angus Heifers

Ear Tag#	%	Sire	Registration #	Birth Date	Birth Wt.	205 Wt.	Ratio	EPD's						12/4/19 Wt.	Frame Score	Cow Wt.
2569w	1B	Liberty D210	4150194	2/23/19	64	449	97	-3.7	60	99	24	18	-2	570	4.9	1280
Dam: Beckton Accent (2152C) x BSF Nebula U049 (1809Z) x Rebellas Robinhood 538 (835N) Out of a AI sire.																
2575w	1B	Clifftop C186	4150222	2/28/19	71	498	108	-4.2	48	78	27	16	-3	680	5.5	1205
Dam: BSF Heritage A533 (2256D) x LSFR Hill Country 2LW (1188S) x Elite 8FW (472K) Cow family with longevity.																
2578w	1B	Clifftop C186	4150106	3/1/19	88	505	109	-4.4	55	87	23	18	-3	736	5.7	1410
Dam: BSF Nebula U049 (1955A) x TR Julian TT780 (1529W) x Beckton Hustler N859 (1319T) Thick Clifftop heifer with performance.																
2590w	1B	Cardinal E372	4150290	3/9/19	67	504	109	-4.9	47	78	23	16	-2	646	5.6	1180
Dam: Poke Big Jon 3029 5038 (2368E) x Beckton Warrior R577 (1844Z) x Shoc Kayak C80 (618L) Out of a first calf heifer.																

Hybrid

650Y	1/2	Brilliance 3212		2/28/19	83	555	114	-2.8	59	94	30	21	-3	834	6.4	1690
Red	Dam: SRF Shear Force 05U (1229Y) x LSF Topcut 24R (1117U) x SF Earthquake K282 (1035R) Deep bodied, meaty heifer with loads of style.															
653Y	1/2	Brilliance 3212		3/6/19	79	514	107	-1.9	63.4	103	27.4	19.4	NA	790	6.5	1440
R Blz	Dam: TT Thundar 859Z (1328B) x SF Earthquake K282 (1154W) x Red Reality (952M) Natural thickness and should make a powerful female. Registered with the Simmental Association.															
662Y	1/2	Epic D636		3/28/19	119	553	115	1.6	76	130	22	20	-5	810	7	1455
Red	Dam: HSR Dakota Beef U653 (1244Z) x SF Earthquake K282 (1096T) x MV Red Light (862H) She started big and is still performing.															

Registered Red Angus Groups

Group 1 - PB Red Angus \$900

2618w	1A	Epic D636	4150242	3/25/19	94	523	113	0.8	69	120	18	17	0	606	6.0	1205
Dam: Straka's 9029 Heardsman 1049 (2233D) x Beckton Warrior R577 (1785Y) x Beckton Hustler N859 (1186S)																
2626w	1A	Epic D636	4150264	3/30/19	93	458	99	0.5	63	109	22	17	0	620	5.8	1215
Dam: Straka's 9029 Heardsman 1049 (2317D) x MTN View Robinhood 987 (746M) x Logan 210 (398J) Heifers bred for performance.																

Group 2 - PB Red Angus \$900

2617w	1A	Epic D636	4150178	3/24/19	66	473	102	-1	59	101	24	18	0	642	5.5	1110
Dam: Straka's 9029 Heardsman 1049 (2084B) x Glacier Logan 210 (598L) x L&L James 202																
2619w	1A	Epic D636	4150102	3/25/19	91	486	105	0.6	65	108	20	16	-3	694	5.6	1395
Dam: TR Julian YT160 (1969A) x Buf Crk Cherokee L129 (1508W) x Glacier Hi Country 926 (633L) These go back to thick cow families.																

Group 3 - PB Red Angus \$900

2605w	1B	Clifftop C186	4150126	3/15/19	83	404	87	-3.7	53	87	20	16	0	602	6.2	1580
Dam: LSFR Final Statement 51Z (2049B) x Larson Timberland 319-8 (1231S) x Rebellas Robinhood 538 (806N)																
2641w	1B	Clifftop C186	4150200	4/18/19	75	446	96	-2.1	57	94	25	17	-1	562	5.9	1290
Dam: LSFR Final Statement 51Z (2158C) x TR Jubilation ST642 (1726Y) x Beckton Hustler N859 (1085R) Thickness bred in.																

Group 4 - PB Red Angus \$900

2628w	1B	Loki D710	4150158	3/30/19	90	412	89	-6.6	45	69	22	28	-4	616	5.1	1150
Dam: BSF Nebula U553 (2036B) x TR Julian TT780 (1570W) x Beckton Hustler N859 (1317T)																
2631w	1B	Loki D710	4150136	4/1/2019	65	452	NA	-3	55	93	21	19	-3	620	5.1	1375
Dam: Beckton Accent W226 (2032B) x Beckton Hustler N859 (1317T) x Glacier Hi Country 926 (551L) These two heifers both go back to the same cow family, 1317T.																

Group 5 - PB Red Angus \$900

2602w	1B	Impression C303	4150190	3/14/19	54	410	TW	-5.1	57	94	23	21	3	566	4.4	1250
Dam: BSF Nebula U049 (2131C) x Larson Totem 150 (1895A) x Glacier Chateau 744 (1259T)																
2603w	1B	Impression C303	4150320	3/14/19	66	418	TW	-5.1	57	94	23	21	3	638	4.7	1250
Dam: BSF Nebula U049 (2131C) x Larson Totem 150 (1895A) x Glacier Chateau 744 (1259T)																
2610w	1A	Impression C303	4150228	3/19/19	91	415	90	-3.2	61	100	20	21	2	634	5.7	1585
Dam: Straka's Heardsman 1049 (2260D) x Beckton Warrior R577 (1385U) x Shoc Kayak C80 (623L) The twins were both raised by their dam with only grass and milk.																

Ear Tag	% Sire	Registration #	Birth Date	Birth Wt.	205 Wt.	Ratio	EPD's							11/20/18 Wt.	Frame Score	Cow Wt.
							BW	WW	YW	MILK	Stay	ME				
Group 6 - PB Red Angus \$900																
2597w	1B Emcee Z289	4150252	3/12/19	71	454	98	-8.1	40	60	28	15	-3	636	5.4	1095	
	Dam: BSF Nebula U553 (2227D) x Beckton Accent W226 (2070B) x Larson Timberland 319-8 (1247S)															
2604w	1B Emcee Z289	4150034	3/14/19	60	387	84	-8	42	65	24	17	0	562	4.7	1355	
	Dam: BSF Nebula U049 (1693Y) x Larson Timberland 319-8 (1388U) x Rebellas Robinhood 538 (806N)															
	Our Emcee females are easy keepers.															
Group 7 - PB Red Angus \$900																
2929w	1B Loki D710	4149986	3/31/19	80	433	94	-5.2	44	67	26	20	-3	614	5.6	1420	
	Dam: TR Jubilation ST642 (1514W) x Buf Crk Proof 3161 (R516) x Buf Crk Bella 3294															
2635w	1B Loki D710	4150038	4/8/19	85	457	99	-5.7	46	72	23	18	-3	604	5.5	1325	
	Dam: BSF Nebula U553 (1732Y) x TR Jubilation ST642 (1375U) x Beckton Hustler N859 (1178S)															
2636w	1B Loki D710	4150036	4/8/19	75	420	91	-4.9	48	80	24	17	-2	586	5.2	1555	
	Dam: BSF Epic T586 (1774Y) x TR Julian PT427 (1376U) x LSFR Hill Country 2LW (1063R)															
	Well matched set of heifers and we will be calving our first Loki heifers this spring.															
Group 8 - PB Red Angus \$900																
2580w	1B Loki D710	4150080	3/1/19	58	448	97	-4.8	49	82	26	16	-2	622	4.5	1360	
	Dam: TR Julian YT160 (1973A) x Larson Timberland 319/8 (1231S) x Rebellas Robinhood 538 (806N)															
2622w	1B Loki D710	4149984	3/27/19	77	466	101	-4.6	46	67	25	18	-3	600	4.8	1255	
	Dam: TR Julian TT780 (1509W) x LSFR Hill Country 2LW (1188S) x LSFR Elite 8FW (472K)															
	More moderate framed females.															
Group 9 - PB Red Angus \$800																
2634w	1A Big Jon 3029	4150054	4/8/19	82	440		0.2	63	106	19	18	1	602	6.0	1450	
	Dam: Beckton Warrior R577 (1785Y) x Beckton Hustler N859 (1186S) x Glacier Logan 210 (598L)															
2646w	1A Big Jon 3029	4149998	4/25/19	92	395		0.3	60	97	26	19	3	516	5.0	1410	
	Dam: DKK Dandy Day 8017 (1666X) x LSFR Hill Country 2LW (1421U) x Glacier Logan 210 (940P)															
Group 10 - PB Red Angus \$800																
2576w	1B Cardinal E372	4150306	2/28/19	54	423		-7.2	46	70	24	16	-3	534	4.5	936	
	Dam: Beckton Scamp B504 (2351E) x BSF Nebula U049 (2173C) x LSFR Hill Country 2LW (979P)															
2577w	1A Cardinal E372	4150268	2/28/19	62	476		-5.3	51	84	27	16	1	562	4.3	1035	
	Dam: Larson Totem 150 (2359E) x Larson Timberland 319-8 (1081R) x Shoco Ramblr Lakota 505 (447J)															
Group 11 - PB Red Angus \$800																
2582w	1B Sovereign 5282	4150270	3/4/19	64	498		-3.8	51	79	26	17	-2	592	5.3	920	
	Dam: BSF Heritage A533 (2437E) x LSFR Hill Country 2LW (1144S) x BFCK Cherokee CNYN 4912 (931P)															
2637w	1A Sovereign 5282	4150294	4/9/19	84	419		-2.0	59	98	29	18	0	510	4.8	962	
	Dam: Larson Totem 150 (2448E) x Beckton Accent W226 (1898A) x Glacier Chateau 744 (1142S)															
2642w	1B Sovereign 5282	4150110	4/19/19	92	444		-4.6	48	75	26	17	-2	580	5.4	1335	
	Dam: BSF Hilltop T096 (1914A) x LSFR Hill 29U (1673X) x Beckton Hustler N859 (1322T)															
Group 12 - PB Red Angus \$800																
2612w	1A Scamp B504	4150142	3/22/19	66	391		-6.6	46	76	22	17	-4	554	5.2	1375	
	Dam: Beckton Accent W226 (2026B) x Beckton Hustler N859 (1370U) x Rebellas Robinhood 538 (742M)															
2645w	1B Scamp B504	4150312	4/22/19	64	463		-4.9	55	89	22	15	-5	516	4.7	890	
	Dam: BSF Heritage A533 (2455E) x Straka's 9029 Heardsman 1049 (2208C) x Beckton Warrior R577 (1385U)															

Sim-Red Angus Commercial Replacements

Group 13 - 1/2 Red Hybrids \$900																
648Y	1/2 Dakota U653		2/22/19	91	519	98	-0.1	66.8	103	25.3	21.4	NA	828	6.4	1400	
	Dam: Beckton Hasten W753 (1836Z) x LSFR Hill Country 2LW (907P) x Red Cedar TTRA 570 (378H)															
657Y	1/2 All Along E082		3/17/19	119	481	91	0.9	59.3	85.6	20.1	18.6	NA	736	6.7	1345	
	Dam: Beckton Hasten W753 (1698Y) x Shoco Firefly V83 (715M) x Gilchrist Chief W515 (62CW)															
	Dakota and All Allong females show natural thickness and style.															
Group 14 - 1/2 Red Hybrids \$900																
1448G	1/2 Impression C303		3/10/19	96	521	98	0.4	66.8	101	17.3	22.3	NA	756	7.0	1580	
	Dam: SF Earthquake K282 1102T x BBS Zima D55 (920L) x C & B Incumbant 4131 (659B)															
654Y	1/2 Sovereign 5282		3/8/19	80	504	95	-1.9	57	90	30	19	-1	740	5.8	1060	
	Dam: SRF Shear Force 05U (1399E) x SF Earthquake K282 (1100T) x C & B Junior (802E)															
	1448G is a 1/2 blood. 1102T was bred by Red Nation and Impression and we though Sim but the DNA came back Impression so the green tag.															
	She is registered with the Simmental Association as a hybrid she just has a green tag.															
Group 15 - 1/2 Red Hybrids \$900																
656Y	1/2 Clint C45		3/16/19	92	480	98	1.2	62	87	21	19	-3	778	6.1	1325	
	Dam: LSFR Jubilation 42W (1742Y) x LSFR Pure Country 16P (1464U) x Rebellas Robinhood 538 (682M)															
658Y	1/2 Clint C45		3/16/19	92	431	88	3.1	71	111	13	17	-3	658	6.4	1285	
	Dam: LJC Mission Statement P27 (1922A) x Beckton Warrior R577 (1526W) x Larson Timberland 319-8 (1228S)															
664Y	1/2 Clint C45		4/20/19	92	478	90	1.8	58.3	86.9	22.3	19.1	NA	640	7.2	1315	
	Dam: LSFR Hill 2LW 29U (1597X) x Larson Timberland 319-8 (1123R) x Shoco Firefly V83 (478K)															
	656Y and 658Y have papers with the Red Angus Association and 664Y is with both the Red Angus and Simmental Associations.															

Yearling Heifers



Ear Tag	% Sire	Registration #	Birth Date	Birth Wt.	205 Wt.	Ratio	EPD's BW	WW	YW	MILK	Stay ME	11/15/17 Wt.	Frame Score	Cow Wt.	
Group 16 - 1/2 Red Hybrids \$900															
644Y	1/2 Cardinal E372		2/14/19	65	489	102	-4.8	54	86	26	17	-2	708	5.8	1080
	Dam: OLF Otis A90 (1411E) x HSR Dakota Beef U653 (1287A) x SF Earthquake K282 (1101T)														
647Y	1/2 Cardinal E372		2/21/19	54	455	95	-5.2	55	89	26	17	-2	678	5.9	1365
	Dam: OLF Otis A90 (1389E) x HSR Dakota Beef U653 (1240Z) x SF Earthquake K282 (983N)														
651Y	1/2 Cardinal E372		3/2/19	72	457	95	-3.4	55	85	23	19	-7	668	5.5	1315
	Dam: SF Real Deal X530 (1282A) x SF Earthquake K282 (1098T) x KS Blizzard L59 (1004P)														
655Y	1/2 Cardinal E372		3/16/19	67	472	99	-6.1	48	76	28	17	-2	644	5.7	1140
	Dam: OLF Otis A90 (1412E) x SRF Shear Force 05U (1242Z) x SF Earthquake K282 (1068S)														
	Bred for thickness. All but 651Y are out of first calf heifers.														
Group 17 - 1/2 Red Hybrids \$800															
649Y	1/2 Emcee Z289		2/27/19	92	419		-3.2	60	85	12	17	-7	644	5.9	1425
	Dam: GCF Amigo (1234Z) x HSR Dakota Beef U653 (1172X) x SF Earthquake K282 (993N)														
652Y	1/2 Emcee Z289		3/4/19	61	463		-2.1	60	92	24	16	-3	636	5.8	1185
	Dam: RFS Clint C45 (1390E) x HSR Dakota Beef U653 (1163X) x SF Earthquake K282 (1027R)														
661Y	1/2 Emcee Z289		3/21/19	56	433		-4.2	60	96	27	18	-3	560	5.0	1290
	Dam: HSR Dakota Beef U653 (1395E) x SF Earthquake K282 (1065S) x NLC Good A Nuff 33G (908L)														
	652Y and 661Y are out of first calf heifers.														
Group 18 - 1/2 Red Hybrids \$800															
182o	3/4 Scamp B504		2/19/19	81	441		-4.6	46	73	23	20	-8	662	5.9	1185
	Dam: SF Earthquake K282 (449U) x Buf Crk Copper 2078 (105D) x Buf Crk Barmaid 2544														
663Y	1/2 Loki D710		4/18/19	76	436		-1.0	57.2	92.1	29.5	20.3	NA	574	5.9	1455
	Dam: SF Earthquake K282 (1149W) x KS Blizzard L59 (979N) x ASR Bold Red One H860 (895K)														
Group 19- 1/2 Red Hybrids \$800															
646Y	1/2 Scamp B504		2/18/19	64	447		-4.6	49	77	24	17	-4	604	4.3	1105
	Dam: SRF Shear Force 05U (1410E) x SF Earthquake K282 (1040R) x C & B Incumbant 4131 (784E)														
659Y	1/2 Scamp B504		3/19/19	68	330	TW	-4.4	55	86	28	18	-8	510	5.0	1410
	Dam: SRF Shear Force 05U (1338C) x SF Earthquake K282 (1023P) x NLC Good A Nuff 33G (910L)														
660Y	1/2 Scamp B504		3/19/19	70	399	TW	-4.4	55	86	28	18	-8	586	4.5	1410
	Dam: SRF Shear Force 05U (1338C) x SF Earthquake K282 (1023P) x NLC Good A Nuff 33G (910L)														
	659Y and 660Y twins were raised by their dam with just milk and grass, no creep feed.														
Purebred Simmental Heifers															
Group 20 - PB Simmental \$900															
1449G	PB Clint C45	3614223	3/12/19	97	605	114	4.0	87.6	127	17	19.4	NA	778	6.6	1660
	Dam: GCF Mr Amigo (1206Y) x SF Earthquake K282 (1027R) x BBS Zima D55 (914L)														
1453G	PB Clint C45	3614202	3/15/19	106	608	115	6.3	94.5	146	17.1	20	NA	800	7.1	1605
	Dam: HSR Dakota Beef U653 (1272A) x SF Earthquake K282 (1032R) x C & B Incumbant 4131 (686B)														
1459G	PB Clint C45	3614243	3/19/19	108	608	115	4.2	79.9	114	22.2	19.2	NA	786	6.9	1410
	Dam: LSF Topcut 24R (1139U) x SF Earthquake K282 (974N) x ASR Cactus Red Z002 (794E)														
	1449G ranked 6/41, 1453G ranked 3/41 and 1459G ranked 4/41. This is a set of high performing heifers.														
Group 21 - PB Simmental \$900															
1462G	PB Clint C45	3614261	3/31/19	93	532	100	4.4	78.8	116	21.6	18	NA	662	6.6	1305
	Dam: TT Thundar 859Z (1357C) x SF Earthquake K282 (1090T) x ASR Cactus Red Z002 (816F)														
1463G	PB Clint C45	3614266	4/3/19	92	538	101	2.2	71.6	103	25.9	19.4	NA	662	6.2	1395
	Dam: LSF Topcut 24R (1117U) x SF Earthquake K282 (1035R) x C & B Junior (802E)														
1464G	PB Clint C45	3614208	4/13/19	92	528	100	3.3	76.9	118	18.8	20.1	NA	692	6.5	1470
	Dam: SF Earthquake K282 (1152W) x KS Blizzard L59 (1005P) x C & B Incumbant 4131 (784E)														
	These three heifers are matched like three peas in a pod.														
Group 22 - PB Simmental \$900															
1457G	PB Clint C45	3614252	3/17/19	84	406	TW	3.3	76.1	116	23.3	18.3	NA	588	5.7	1395
	Dam: SRF Shear Force 05U (1330B) x SF Earthquake K282 (1100T) x C & B Junior (802E)														
1458G	PB Clint C45	3614277	3/17/19	82	441	TW	3.3	76.1	116	23.3	18.3	NA	640	5.7	1395
	Dam: SRF Shear Force 05U (1330B) x SF Earthquake K282 (1100T) x C & B Junior (802E)														
	These twins were both raised by their dam with no creep feed just grass and milk.														
Group 23 - Choice Take one or as many as you want. \$800															
2581w	1B Clifftop C186	4150256	3/2/19	64	480	104	-5.8	50	81	27	15	-4	622	4.0	1150
	Dam: Beckton Emcee Z289 (2236D) x BSF Nebula U049 (2022B) x Beckton Hustler N859 (1322T)														
2638w	C2 Epic D636	4150012	4/12/19	56	396		-1.6	61	100	20	18	-1	499	4.0	1355
	Dam: TR Julian TT780 (1645X) x Glacier Chateau 744 (680M) x MTN View Bitterroot R620														
	This heifer was born solid red (PB Red Angus) and has gotten more white throughout her hair and now looks like a Shorthorn. By sale day we will have her DNA back but the only bull around was her sire, Epic, in her dams pasture. We call her a phenomenon.														
645Y	1/2 Thundar		2/16/19	78	NA	NA	NA	NA	NA	NA	NA	NA	746	5.8	1285
	Dam: LCC Major League A502M (1149S) x Glacier Supreme 682 (617L) x Larson India Chief (444)														
	I didn't get this half blood turned into either association so is being sold without her performance info and can't be registered.														

A Look At Frame Score

One frame score equals roughly 2" in hip height.

We have agreed with our bull buyers for several years that the frame scores calculated for our catalog using the BIF formula seem unrealistically low. The bulls grow out bigger than that. For 2000-2004, we re-measured the bulls in March and compared that to the original frame score based on December measurements. In all cases the frame scores

went up. Some by more than a full frame score.

Note: *We hear a lot about the need for uniformity in beef cattle. Frame size measurement is not an exact science, but we do believe the uniformity in the entire Loonan program, along with the natural fleshing ability, is why calves by Loonan bulls excel on the rail.*

About The Catalog

RED ANGUS has four categories of registered Red Angus.
1A – Purebred 100% Red Angus with no disqualifying characteristics.

1B – 87% to 99% Red Angus with no disqualifying characteristics.

II – 86% or greater Red Angus blood, also 1A and 1B animals that are disqualified because of scurs, white in front of navel, etc. Multiple sire animals (more than one purebred bull in pasture) are also Category II.

III – Less than 87% Red Angus blood.

SIMMENTAL has a complete upgrading program from the half-blood to the purebred.

POLLED: P = Polled
P/S = Polled/Scurred,
DP = Double Polled (both parents polled)
H = Horned

EPDs (Expected Progeny Difference)

Simmental data is from the American Simmental Association. Red Angus data is from the Red Angus Association of America. Growth and carcass EPDs are configured on the same common multi-breed base.

EPDs in the catalog are current as of this fall. When new data is processed by the associations, these figures will be updated and adjusted and the EPDs on your registration papers may not be the same as those available at sale time due to new data at the association.

EPD Terms

CEh – *Calving Ease Heifer:*

Simmental: Expected ease with which calves sired by the bull will be born to first-calf heifers. Highest (+) figures mean more unassisted births. Lowest (-) figures mean less unassisted births.

Red Angus: Expresses calving ease as CED (Calving Ease Direct). We have ranked each bull one-, two- or three-star based on the best information we have available on the individual and close relatives.

*** Should produce few calving problems when bred to first-calf heifers.

** Should work well on growthy heifers and cows.

* Recommended for use on cows only.

BW – *Birth Weight EPD*

Expected birth weight of calves sired by this bull. Heavier (+) or lighter (-) than "0" EPD animals are expressed in pounds. The BW EPD takes into account the genetics of the sire and dam and the actual birth weight of this bull. We weigh all calves on a spring scale within 24 hours of birth. We do not estimate any birth weights. Some calves born late on pasture are not weighed and are reported as UNK (unknown).

WW – *Weaning Weight EPD*

Expected weaning weight of this bull's calves, heavier (+) or lighter (-) than an animal with a "0" EPD are expressed in pounds. Weaning weight EPD takes into account the genetics inherited from the sire and dam in addition to the actual 205-day weaning weight of the individual.

YW – *Yearling Weight EPD*

Expected weight of this bull's calves at 365 days of age, expressed in pounds, heavier (+) or lighter (-) than an animal with a "0" EPD.

MCE-h – *Maternal Calving Ease EPD of first-calf heifer*

Simmental: Expected ease with which this bull's daughters calve as first calf-heifers. Larger positive figures indicate a higher percent of unassisted births (MCEc - cow).

STAY – *Stayability EPD – Red Angus*

Predicts the probability of a bull's daughters remaining productive until at least six years of age.

ME – *Maintenance Energy EPD – Red Angus*

The ME EPD predicts differences in energy requirements of mature daughters of an individual and is expressed in Mega-calories per month.

MM – *Maternal Milk EPD – Simmental or M – Milk EPD – Red Angus*

Expected increase or decrease in weaning weight of daughters of this bull due to milk production compared to breed average. **Note:** *Data on this trait is limited, and, in many instances, has low accuracy.*

Marb – *Marbling EPD*

Predicts differences for carcass marbling score as expressed in marbling score units. Higher marbling scores are positively correlated with higher carcass grades.

REA – *Ribeye Area EPD*

Predicts differences of carcass rib eye area between the 12th and 13th rib. Ribeye area is positively correlated with carcass yield grade which also considers fat thickness and carcass weights.

FAT or BF – *Backfat EPD*

Predicts differences for carcass fat depth over the 12th rib as expressed in inches. Fat thickness is negatively correlated with carcass yield grade which also considers ribeye area and carcass weights.

API Index – *All-Purpose Index – Simmental*

API evaluates sires being used on the entire cowherd (bred to both Angus first-calf heifers and mature cows) with a portion of their daughters being retained for breeding and steers and remaining heifers being put on feed and sold on grade and yield.

TI Index – *Terminal Index – Simmental*

TI is designed for evaluating sires' economic merit in situations where they are bred to mature Angus cows and all offspring are placed in the feedlot and sold on grade and yield.

HB Index – *HerdBuilder Index – Red Angus*

HB will assist in building profitable cowherds with bulls mated to both heifers and mature cows, replacement heifers retained in the herd and remaining progeny sold on a quality-based carcass grid.

GM Index – *GridMaster Index – Red Angus*

GM will increase profitability with bulls mated to mature cows and all progeny sold on a quality-based carcass grid.

Red SimAngus™ –

The Red Angus Association of America and American Simmental Association have worked together to build a multi-breed database that includes SimAngus™. In the catalog, I have used the Association for the sire of each calf to publish as long as available.

THRIVE



Ranch Tested. Rancher Trusted.

Red Angus
RedAngus.org

Position your ranch to thrive with the industry's most-favored female.

An independent university study compared eight years of Superior Livestock Auction data, revealing Red Angus-sired heifers commanded up to \$11/cwt more than females of all other breed types.

RED ANGUS • RED SIMMENTAL • RED SIMANGUS



Judy Loonan
Rick Thompson, Herdsman

1724 Holly Avenue • Corning, IA 50841

Phone: (641) 322-3921

Judy Loonan – (515) 423-5642 (cell)

Rick Thompson – (515) 229-0920 (cell)

Email: lsfr@wildblue.net

“Located in the hills of southwest Iowa”

PRESORTED
FIRST CLASS
US POSTAGE PAID
UNITED PRINTING

RETURN SERVICE REQUESTED

45th Anniversary Production Sale Saturday, February 1, 2020

Private Treaty Auction • 1 p.m. CST Sharp
At the Farm • Corning, Iowa

RED ANGUS • RED SIMMENTAL • RED SIMANGUS™



EVERY GENETIC DECISION WE MAKE ... LEADS TO THIS DAY.

100 Yearling Bulls 60 Open Heifers

- 26 years of carcass traits
- Calving ease
- Performance
- Disposition
- Uniform, thick and easy-fleshing
- Priced from \$2,800, \$3,000 and \$3,200
- Individual seedstock heifers
- Commercial replacement heifers
- Offering our entire crop of 2019 SimAngus™ F1 heifers
- “Leave ‘Em and Breed ‘Em” Program
- Priced from \$800 to \$1,200

Because this is the day our customers trust our genetic choices to influence their cowherd and, ultimately, their profitability and bottom line. Our customers are the focus of every selection decision we make when purchasing new herd sires. These genetics must be predictable in our program so that, without a doubt, they will increase profitability, consistency and performance for our customers.

